



# INSTALLATION INSTRUCTIONS

## PSB-2059

### PLASMA DISPLAY MOUNTING BRACKET

Prior to assembly, unpack carton completely and verify contents.

If you are missing any of the following components, please contact Customer Service at 1-800/582-6480

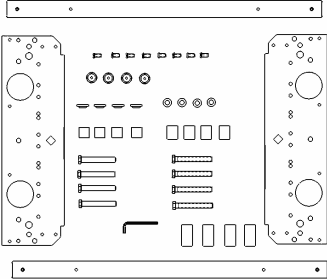


Figure 1

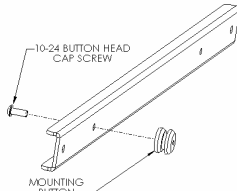


Figure 2

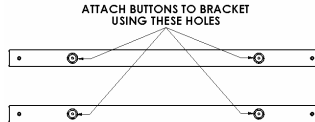


Figure 3

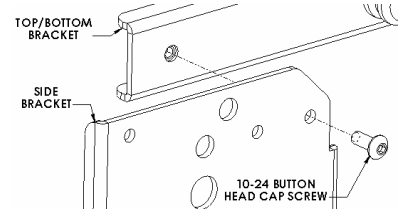


Figure 4

- (2) Plasma Side Bracket
- (4) Mounting Button - Tapped
- (4) M8 x100mm Hex Head Cap Screw
- (1) 13mm Wrench
- (4) .805 OD x .324 ID Nylon Shoulder Washer
- (4) M8 x 80mm Hex Head Cap Screw
- (4) .750 x .385 x 1.500 Nylon Spacer

- (2) Plasma Top/Bottom Bracket
- (8) 10-24 x .5 Button Head Cap Screw
- (4) 18mm x 8.3mm x 30mm Nylon Spacer
- (4) .740 x .390 x 1.000 Nylon Spacer
- (4) M8 Flat Steel Washer
- (1) 1/8 Allen Key

BEFORE PROCEEDING, READ INSTALLATION INSTRUCTIONS COMPLETELY

## CAUTION!

**PLASMA DISPLAYS ARE EXTREMELY FRAGILE.**

1. Using a 10-24 button head cap screw inserted from back side of bracket, secure mounting button, with chamfered hole of mounting button (larger surface) facing bracket, to top and bottom bracket (four places) (see Figure 2 & Figure 3).
2. Using four 10-24 button head cap screws, attach top and bottom to side brackets (see Figure 4 & Figure 5).
3. for 42" models, stack white and short black nylon spacers over mounting holes on back of screen and use 100mm screws. For 50 & 58" models, use the 80mm screws and long black spacer. Attach mounting brackets to display using the M8 screws, shoulder and steel washers (see Figure 6 & Figure 7).
4. With the aid of another person, lift your display up to the Chief Mount, aligning buttons of mounting brackets with slots in the Chief Mount.
5. Lower safety latch on the Chief Mount to secure your display, making sure latch is completely engaged.

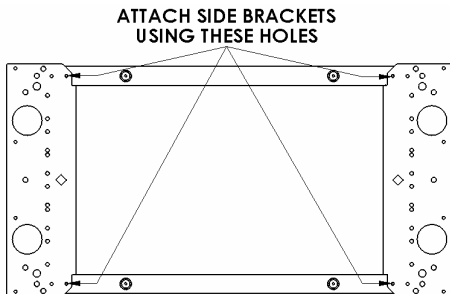


Figure 5

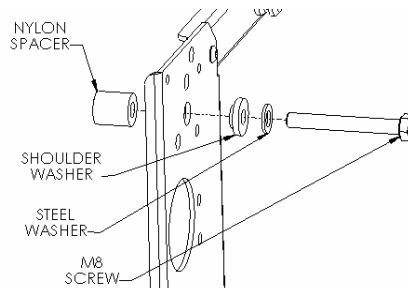


Figure 6

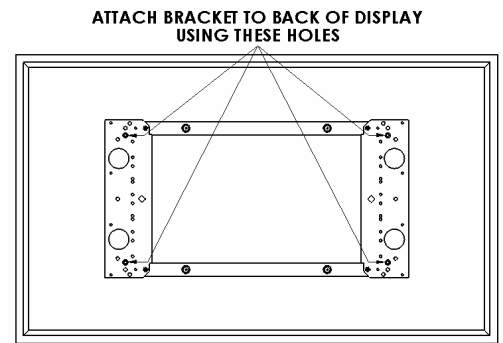


Figure 7