



SPEAKER ADAPTERS

PACLR1™ Left/Right Speaker Adapter

- Fully assembled
- Low profile
- Expandable for 30 - 50" flat panels
- Compatible with 8" (203 mm) and 14" (356 mm) Q-Latch patterns



PAC302™ Center Speaker Shelf

- Interfaces with Chief's Q-Latch Mounting System
- Includes 5" (127 mm) of height adjustment for different size speakers
- Compatible with 30 - 50" flat panels



PACY3™ Yamaha Center

- Compatible with YAMAHA YSP-800, YSP-1000/YSP-1, YSP-900, YSP-3000, YSP-30D, YSP-3050, HTY7030, YSP-4000, YSP-40D, HTY-7040
- Compatible with 14" (356 mm) Q-Latch patterns
- Height adjustable for a flush installation

YSM2™ Yamaha Wall Mount

- Compatible with YAMAHA YSP-1100, YSP-800, YSP-1000, YSP-1
- Low profile wall mount installation
- Provides room for outlet placement



Fusion Center Channel Speaker Adapter

- Compatible with new fusion fixed and tilt wall mounts
- Expandable to fit flat panels up to 65"
- Universal design accommodates most speaker brands
- Low profile design does not add depth to installation

Fusion Left/Right Channel Speaker Adapter

- Compatible with new fusion fixed and tilt wall mounts
- Expandable to fit most flat panels
- Universal design accommodates most speaker brands
- Low profile design does not add depth to installation



PACCC1™ Center Channel Speaker Adapter

- Fully assembled
- Low profile
- Expandable for 30 - 50" Flat Panels
- Compatible with 8" (203 mm) and 14" (356 mm) Q-Latch patterns



MEDIA ADAPTERS

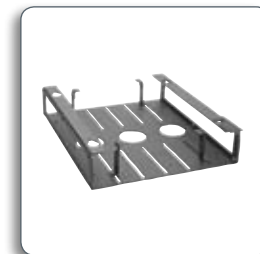
MAC251™ CPU/DVD/VCR Universal Adapter

- Adapts to 8" (203 mm) Q-Latch pattern
- Allows easy access to drives and input/output connections
- Compatible with media devices up to: (WxD) 13.75 x 3.88" (349 x 99 mm)



PAC251™ CPU/DVD/VCR Universal Adapter

- Adapts to 14" (356 mm) Q-Latch pattern
- Allows easy access to drives and input/output connections
- Compatible with media devices up to: (WxHxD) 15.5 x 17.63 x 3.5" (394 x 448 x 89 mm)



PAC252™ CPU Universal Adapter

- Adapts to 14" (356 mm) Q-Latch pattern
- Allows easy access to drives and input/output connections
- Compatible with media devices up to: (WxHxD) 14.5 x 16 x 4.5" (368 x 406 x 114 mm)





MWC™ Medium Tilt Mount with Media Player Storage

- Complete solution designed to easily integrate a media player into a flat panel installation
- Lockable tilt at 0 , 5, 10, 15
- 8"(203 mm) Q-Latch installation
- Compatible with media devices up to: (WxD)
18.81 x 3.81" (478 x 97 mm)



PWC™ Large Tilt Mount with Media Player Storage

- Complete solution designed to easily integrate a media player into a flat panel installation
- Lockable tilt at 0°, 5°, 10°, 15°
- 14"(356 mm) Q-Latch installation
- Compatible with media devices up to: (WxD)
18.81 x 3.81" (478 x 97 mm)



PRE-INSTALLATION POWER BOXES

PAC510™ Flat Panel Pre-Wire In-Wall Box

- Retro-fit installation design
- Installs between 16" centers
- Capacity for up to four single gang junction boxes and conduit, surge protectors and excess cable



PAC515™ Flat Panel Pre-Wire In-Wall Box

- New Construction or retro-fit installation design
- Installs between 16" centers
- Capacity for up to four single gang junction boxes and conduit, surge protectors and excess cable



PAC520™ Flat Panel Pre-Wire In-Wall Box

- New Construction or Retro-fit installation design
- Installs horizontally between 16" centers or vertically on a single stud
- Capacity for up to four single gang junction boxes and conduit, surge protectors and excess cables



PAC521P™ Power-Infused Pre-install Box

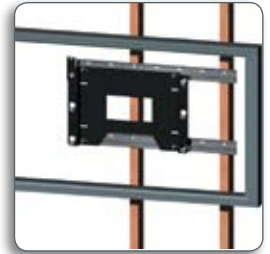
- Replaces the need for an outlet
- Provides AC cleaning with-out loss of power
- Power conditioner is invisible and recessed into the in-wall box
- Provides an organized, recessed space for excess cables



LATERAL SHIFT ADAPTERS

PAC125™ Lateral Shift

- All hardware included
- Provides additional lateral shift for fixed and tilt wall mounts
- Includes qty. two 28" (711 mm) extrusions



PAC126™ Lateral Shift

- Provides additional lateral shift for fixed and tilt wall mounts and spans three studs
- All hardware included
- Includes qty. two 36" (914 mm) extrusions



ENS™ Lateral Shift Extrusion for Video Walls

- Custom length lateral shift extrusion up to 108" (274 cm)
- Great solution for horizontally tiled flat panel installations
- All hardware included



IN-WALL ACCESSORIES

PAC501™ Large In-Wall Swing Arm Box

- Designed to integrate an in-wall swing arm for a flush installation
- Compatible with PNRIW, PWRIW, MWRIW





PACHFK1™ Header/Footer Kit for PAC501

- Easily installs between three 16" center studs with center stud removed
- Reduces PAC501 installation time
- Provides a solid support structure, eliminating the need to frame around the PAC501 with 2x4 studs
- Provides clearance holes for the knockouts to simplify electrical wiring



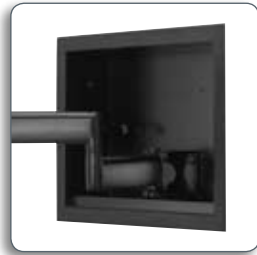
MAC501™ Medium In-Wall Swing Arm Box (shown with JWDIW™)

- Designed to integrate an in-wall swing arm for a flush installation
- Installs between 16" center stud system
- Compatible with JWDIW



FAC501™ Small In-Wall Swing Arm Box (shown with FWDIW™)

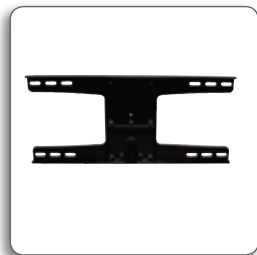
- Designed to integrate an in-wall swing arm for a flush installation
- Installs between 16" center stud system
- Compatible with FWDIW



STEEL STUD ADAPTERS

MAC118™ Medium Swing Arm Steel Stud Adapter

- Retro-fit installation design
- Installs on 16"/20"/24" centers
- Capacity for up to four single gang junction boxes and conduit, surge protectors and excess cables
- Provides room for outlet placement



MAC119™ Large Swing Arm Steel Stud Adapter

- Compatible with MWR and PWR products
- Attaches directly to 16"/20"/24" center steel studs
- Includes all mounting hardware
- Low profile only adds .1345" (3.42 mm) to installation depth



PAC115™/PAC116™/PAC117™ Fixed & Tilt Wall Mount Steel Stud/Drywall Anchor Kit

- Kit includes (4, 6, or 25) heavy duty toggle anchors; quantity coincides with part number
- Drywall must be a minimum of .5" (12.7 mm)
- Max Load: 175 lbs (79.3 kg)



SPECIALTY ADAPTERS

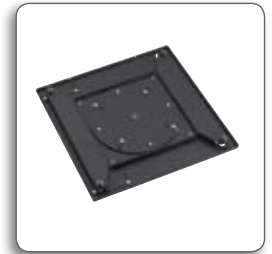
PAC390™ Cube System Adapter

- Compatible with large fixed and tilt wall mounts 14" (356 mm) Q-Latch pattern
- Quickly adapts office wall system with adjustable depth up to 3.81" (97 mm)
- Holds up to 175 lbs (79.3 kg)



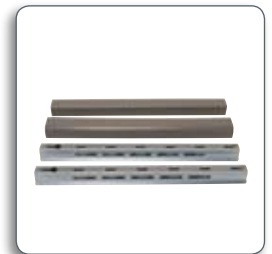
PAC400™/MAC400™ 90° Rotation Adapter

- Provides fingertip flat panel rotation from landscape to portrait mode
- PAC400 is compatible with Chief 14" (356 mm) Q-Latch pattern
- MAC400 is compatible with Chief 8" (203 mm) Q-Latch pattern
- Low profile: Only 1.06" (26.9 mm) added depth



PAC124™ 24" Stud Adapter

- Designed to adapt to MWH/MWR/PWR/PNR/PDR swing arms to allow for 24" (609 mm) center stud installation
- Kit includes 26" (660) wall extrusions and aesthetic covers



Fusion CAT 5/ Surge Adapter (shown with PACPC1™)

- Compatible with Fusion fixed and tilt wall mounts





POWER ADAPTERS

PX2W™ Power Outlet Conditioner

- Replaces the need for an outlet
- Provides AC cleaning without loss of power



PAC521P™ Power-Infused Pre-install Box

- Replaces the need for an outlet
- Provides AC cleaning without loss of power
- Power conditioner is invisible and recessed into the in-wall box
- Provides an organized, recessed space for excess cables



PACPC1™ Power Filter Kit

- Complete kit for easy integration with: Wall Mounts, 1.5" NPT Extension Columns, Pre-Installation Boxes and In-Wall Swing Arm Boxes
- Noise filtering for a crystal clear signal
- Surge protection (1890 Joule Rating)
- Automatic shutoff for over voltage protection
- Includes two outlets and a 24" (609 mm) power cord



ACCESSORY SHELVES

PAC101™ Shelf for Single Stud Wall Installations

- Dimensions (HxWxD): 2.18" x 14" x 10.4" (5.53 x 35.56 x 26.41 cm)
- Weight Capacity: 20 lbs (9.1 kg)
- All mounting hardware included



PAC150™ Video Conferencing Camera Shelf

- Compatible with 8" (203 mm) and 14" (356 mm) Q-Latch pattern mounts
- Weight Capacity: 150 lbs (68 kg)
- Shelf dimensions: (WxD) 12 x 7" (305 x 178 mm)
- Height Adjustable: 5 1/4"
- Maximum weight on shelf: 10 lbs (4.5 Kg)



PAC710™ Carts and Stands Accessory Shelf

- Supports Chief's line of flat panel floor stands and carts (PFC, MFC, PF1, MF1, PF2 and MF2 products)
- Quick installation and adjustments
- Weight Capacity: 25 lbs (11.34 kg)



PAC100™ Smoked Acrylic Accessory Shelf

- Compatible with PPC Presenter's cart
- Dimensions: (WxD) 29½ x 18" (749.3 x 457.2 mm)
- Weight Capacity: 35 lbs. (15.88 kg)

PAC102™ Shelf for Pole Installations

- Dimensions (HxWxD): 2.18" x 14" x 10.4" (5.53 x 35.56 x 26.41 cm)
- Weight Capacity: 20 lbs (9.1 kg)
- All mounting hardware included for 1.5" NPT installation



Fusion Component Shelf *(model number varies with mount type and screen size)*

- Height adjustable to accommodate different flat panels
- Attaches directly onto Fusion wall mounts for easy centering
- Glass shelf included for aesthetic look



Fusion Video Conferencing Shelf *(model number varies with mount type and screen size)*

- Height adjustable to accommodate different flat panels
- Attaches directly onto Fusion wall mounts for easy centering
- Slotted shelf allows for secure camera attachment



PAC103™ Equipment Safety Strap

- Compatible with PAC101 and PAC102 Shelf
- Adjustable strap provides added security for components

