

INSTALLATION INSTRUCTIONS

ELEDTS42W-SM Static Wall Mount

Prior to assembly, unpack carton completely and verify contents. If you are missing any of the following components, please contact Technical Support at 1-800-776-5768.

- (1) PLASMA STATIC WALL MOUNT
- (2) LATCH, SAFETY
- (2) 10-24 X .5 FH UNDERCUT SCREW
- (2) WASHER, NYLON
- (2) NUT, NYLOCK, 10-24
- (4) M8 X 30MM BUTTON HEAD CAP SCREWS
- (4) MOUNTING BUTTONS-BLACK



Figure 1

- (4) .75ODX.3125IDX.0625 WASHER, STEEL
- (1) M5 Allen Wrench

CAUTION: PLASMA DISPLAYS ARE EXTREMELY FRAGILE!

READ INSTALLATION INSTRUCTIONS COMPLETELY BEFORE PROCEEDING

1. If mounting knobs are installed on plasma from the factory, remove these and install enclosed mounting buttons with one washer underneath each button utilizing the enclosed M8 screws, ensuring not to over tighten (See Figures 2 & 3).
2. Using two 10-24 x .5 FH undercut screws, Nylon washers between safety latch and mount, and 10-24 Nylock nuts, install the safety latches loose enough to move but tight enough to remain in place when raised.
3. Securely anchor the plasma static mount to the wall using wall studs or supporting framework.
4. Make sure the flag is lowered to the side before attempting to place the plasma on the mount.
5. With the aid of another person, lift the plasma display up to the mount, align the mounting buttons on the plasma with the teardrop slots in the mount, and set the plasma into place (see figure 4).

CAUTION If the latches will not travel to the full upright position, remove and reseat the display.

6. Position (raise) the flags to secure the plasma (See Figure 4).

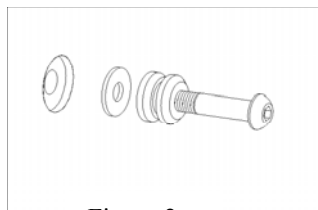


Figure 2

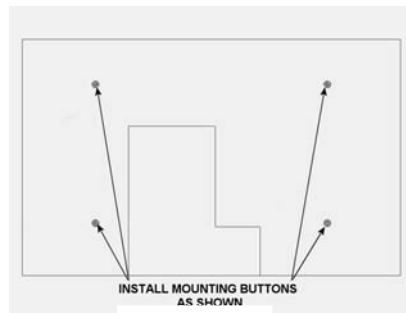


Figure 3

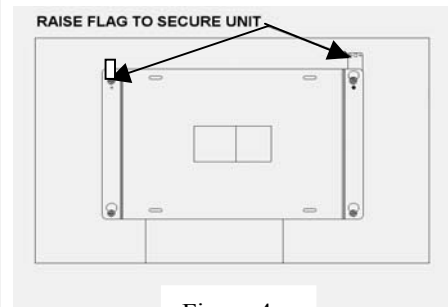


Figure 4