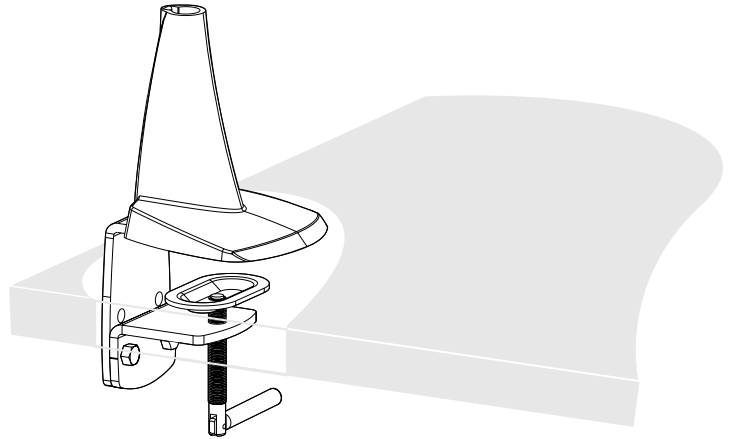




INSTALLATION MANUAL

Model FSA-020 Desk Clamp

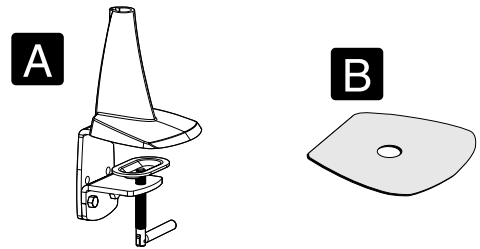


Made in the U.S.A.

Read these instructions carefully and follow all steps in sequence.

COMPONENTS

- A Desk Clamp
- B Protective Pad



CAUTION

Do not make substitutions for components, fasteners or tools unless the installation Manual specifically instructs you to do so.

FASTENERS

- a Adhesive square
- b Cable Ties and Clips



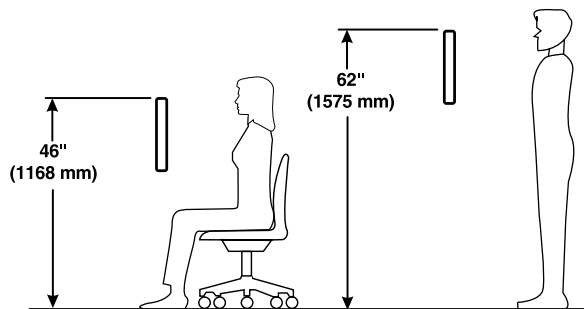
TOOLS FOR INSTALLATION

- 1/8" hex wrench- provided
- 9/16" open end wrench (only if disassembly of the Clamp is necessary for installation)- customer supplied

TOOLS FOR ADJUSTMENT

- 1/8" hex wrench- provided

ERGONOMIC EYE HEIGHT RECOMMENDATIONS



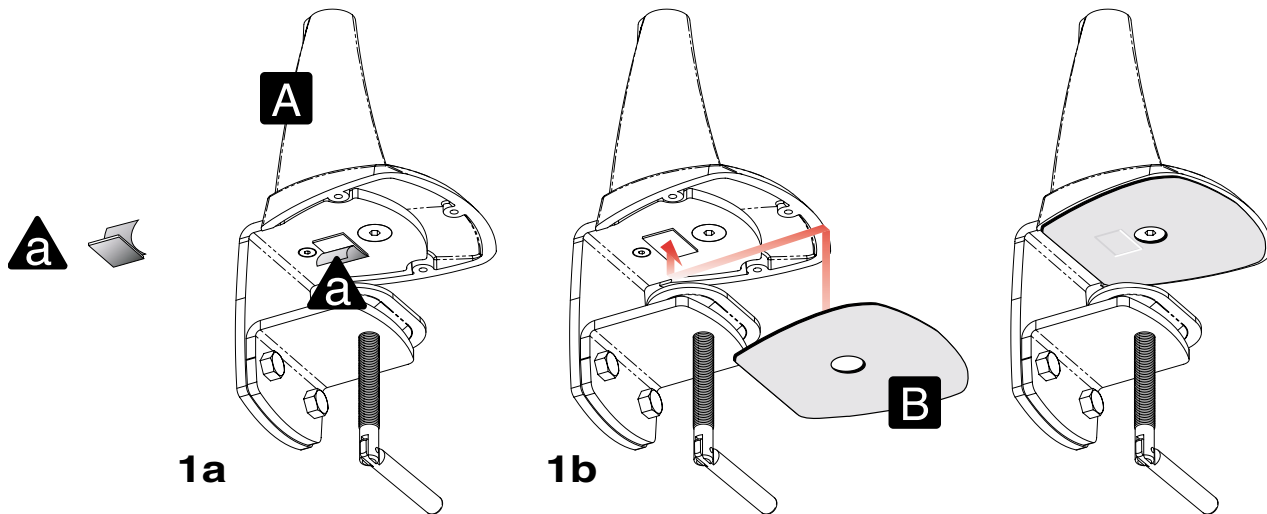
	Eye Height		Center of Operating Range
	Standing	Sitting	
Average Female	59" (1509 mm)	44" (1118 mm)	54" (1377 mm)
Average Person	62" (1567 mm)	46" (1171 mm)	54" (1377 mm)
Average Male	64" (1636 mm)	48" (1232 mm)	54" (1377 mm)

ATTACH PROTECTIVE PAD

STEP
1

1a. Remove the backing from the Adhesive Square; Stick the Adhesive Square to the bottom of the Base as shown and remove the adhesive covering.

1b. Align the Protective Pad with the bottom of the Base. The Adhesive Square will hold the Pad to the Base while the Base is attached to the desk.



MOUNT DESK CLAMP TO WORKSURFACE

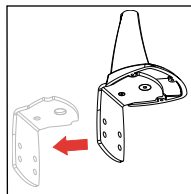
STEP
2

NOTE: This manual covers two mounting options:

- Option 1: Slide Clamp onto worksurface
- Option 2: Disassemble Clamp and attach it to worksurface

Choose the option that is appropriate for your worksurface.

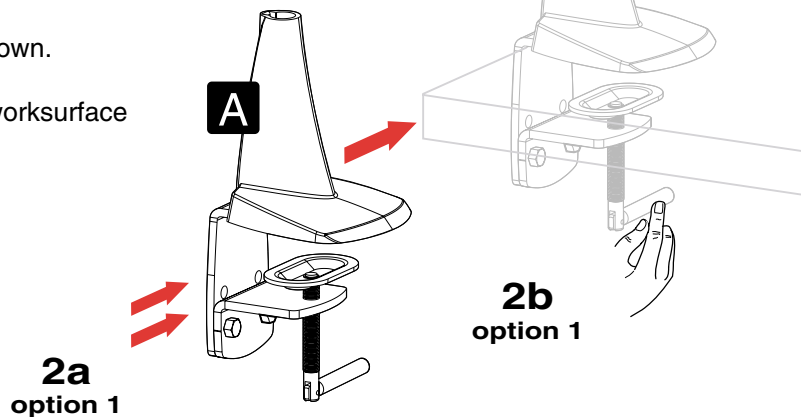
NOTE: The L-Bracket may be removed from the Desk Clamp for grommet mounting. Contact your Chief Manufacturing representative for details. (See the Dimensions section for hole pattern of the Base.)



Option 1: Slide Clamp onto worksurface

2a. Slide Clamp onto worksurface as shown.

2b. Tighten Clamp to secure Clamp to worksurface



Option 2: Disassemble Clamp and attach it to worksurface

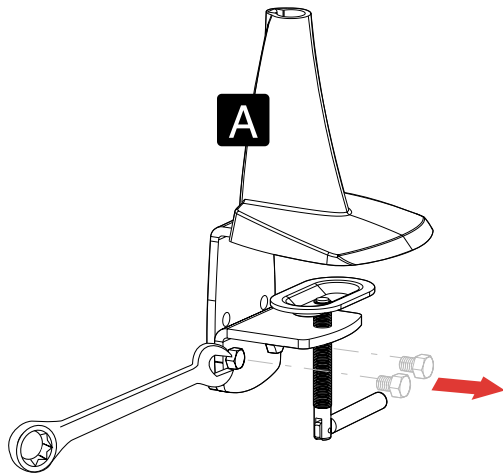
STEP
2

2a. Using a 9/16" wrench, remove screws from Clamp and retain them for use in step 2c.

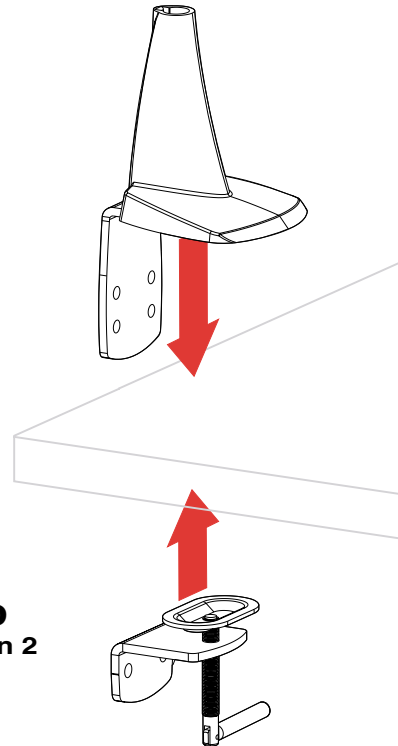
2b. Attach both Clamp components to the worksurface as shown.

2c. Using the 9/16" wrench, attach Clamp components together using screws retained from step 2a.

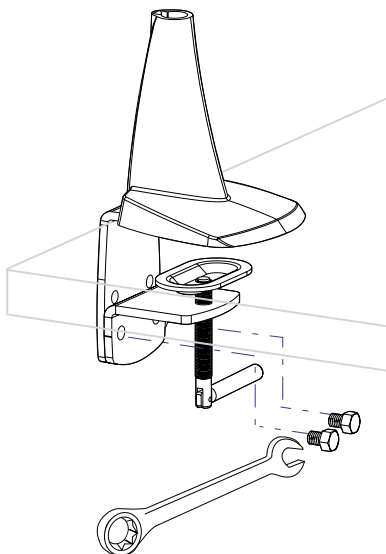
2d. Tighten Clamp to secure to worksurface.



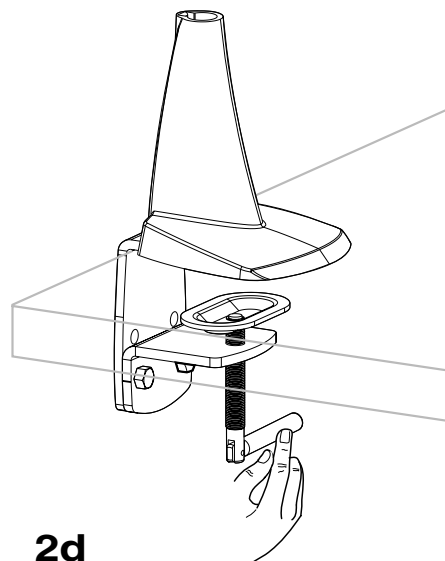
2a
option 2



2b
option 2



2c
option 2



2d
option 2

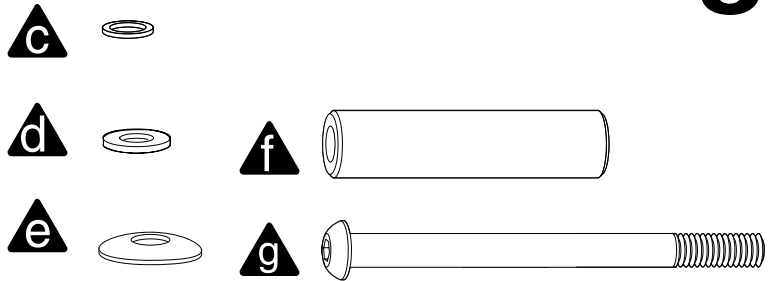
ATTACH 9" EXTENSION OR VERTICAL ADJUSTMENT ARM TO DESK CLAMP

STEP
3

FASTENERS

NOTE: All Fasteners listed here are supplied with your Extension or Arm.

- c Plastic Washer
- d Thrust Washer
- e Spring Washer
- f Mounting Pin
- g 5/16"-18 x 4" Button Head Screw



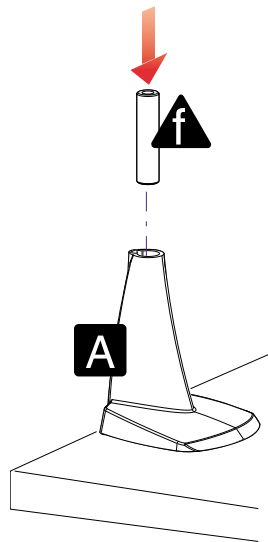
TOOLS FOR INSTALLATION AND ADJUSTMENT

- 3/16" hex wrench- provided with Extension or Arm
- 1/8" hex wrench- provided

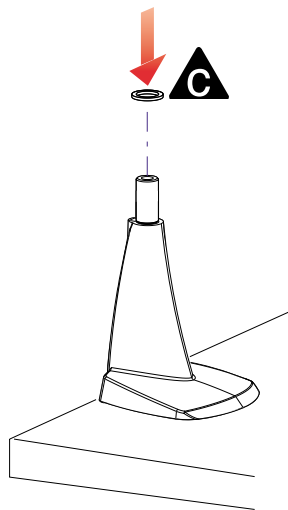
3a. Insert Mounting Pin into Desk Clamp.

3b. Slide Plastic Washer over Mounting Pin.

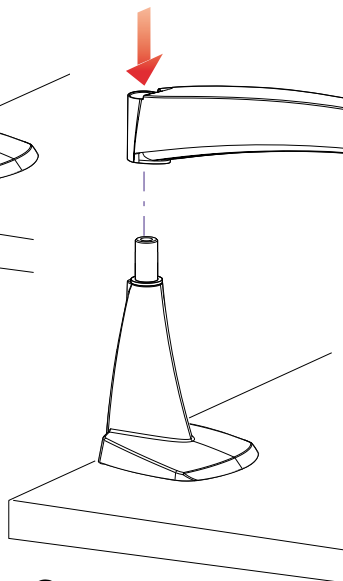
3c. Slide Extension or Arm onto Mounting Pin.



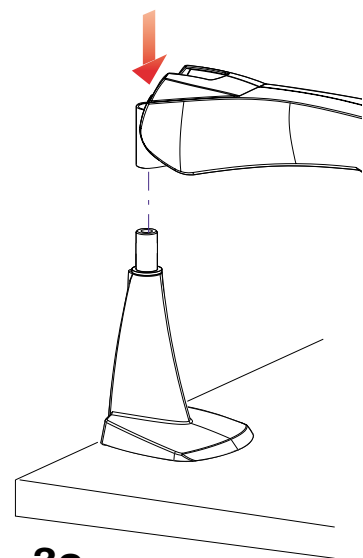
3a



3b



3c
9" Extension



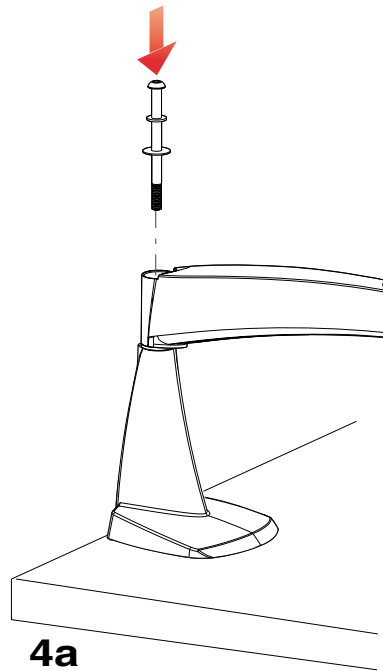
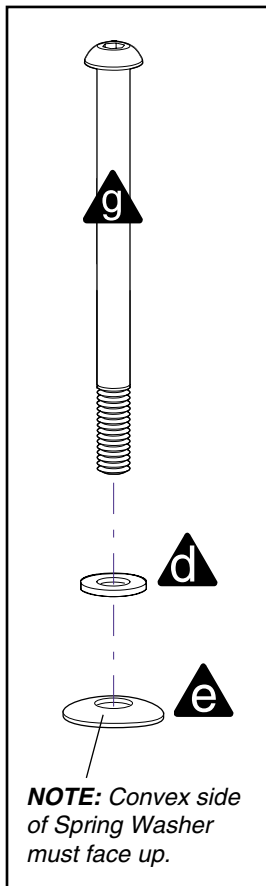
3c
Vertical
Adjustment Arm

SECURE 9" EXTENSION OR VERTICAL ADJUSTMENT ARM TO DESK CLAMP

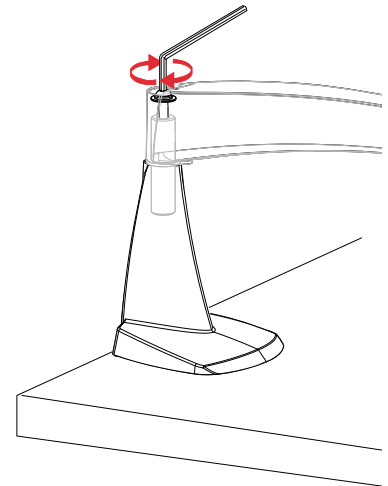
STEP
4

4a. Insert 5/16"-18 x 4" Button Head Screw (with washers as shown) into the Extension or Arm from above.

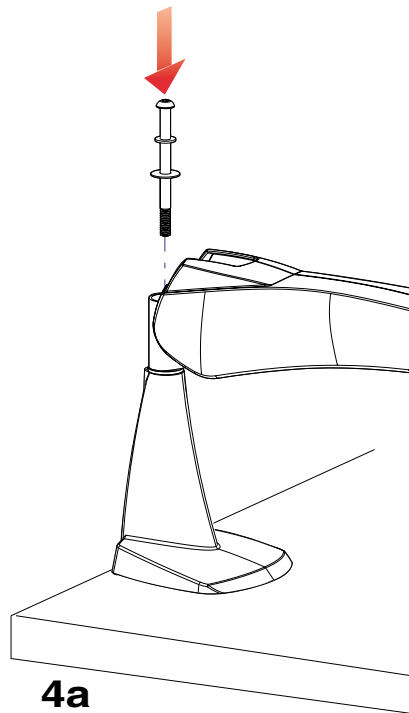
4b. Using the 3/16" hex wrench (provided with Extension or Arm) tighten 5/16"-18 Nut, testing the "swing" of the Extension or Arm until it reaches desired tension.



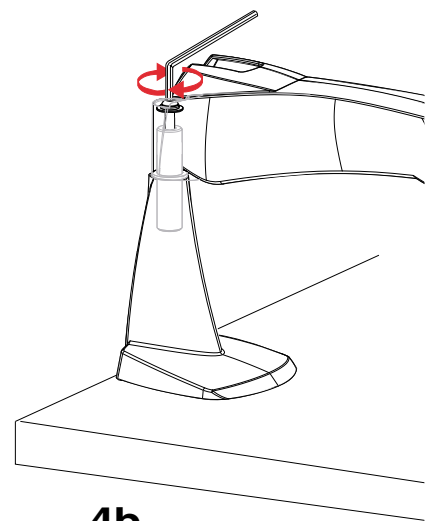
4a
9" Extension



4b
9" Extension



4a
Vertical
Adjustment Arm

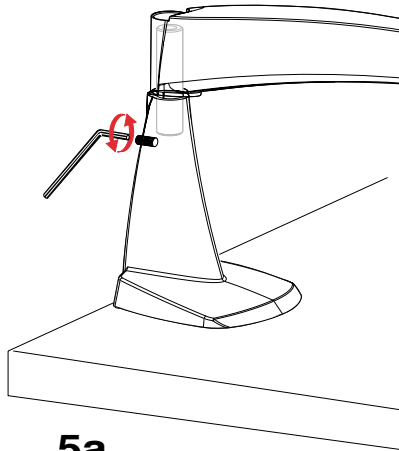


4b
Vertical
Adjustment Arm

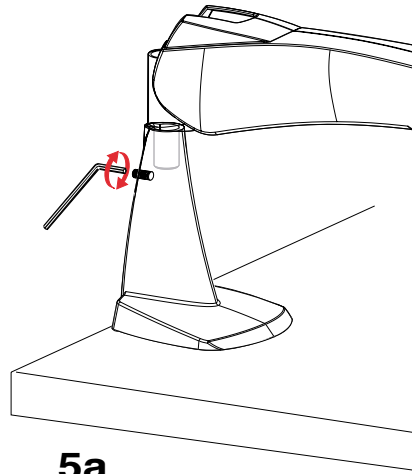
TIGHTEN SET SCREW

STEP
5

5a. Using the 1/8" hex wrench (provided) tighten set screw on back of Desk Clamp



5a
9" Extension

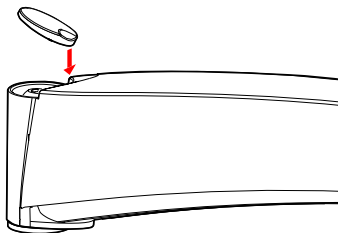


5a
Vertical
Adjustment Arm

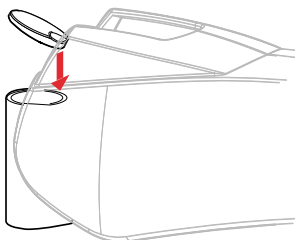
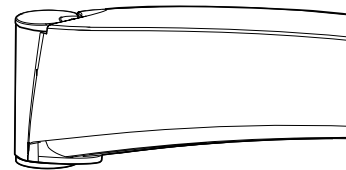
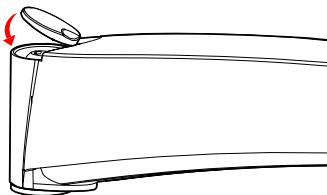
REPLACE THE CAP

STEP
6

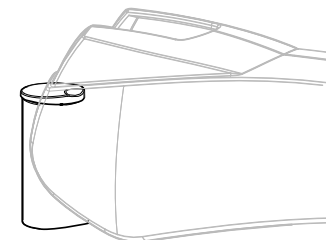
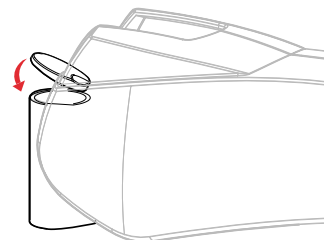
6a. Snap Cap into place at top of Extension or Arm. (Note that dimple on top of Cap lines-up with depression at top of Extension or Arm.)



6a
9" Extension



6a
Vertical
Adjustment Arm



CABLE ROUTING

STEP 7

7a. Route cables using provided Cable Ties and Clips

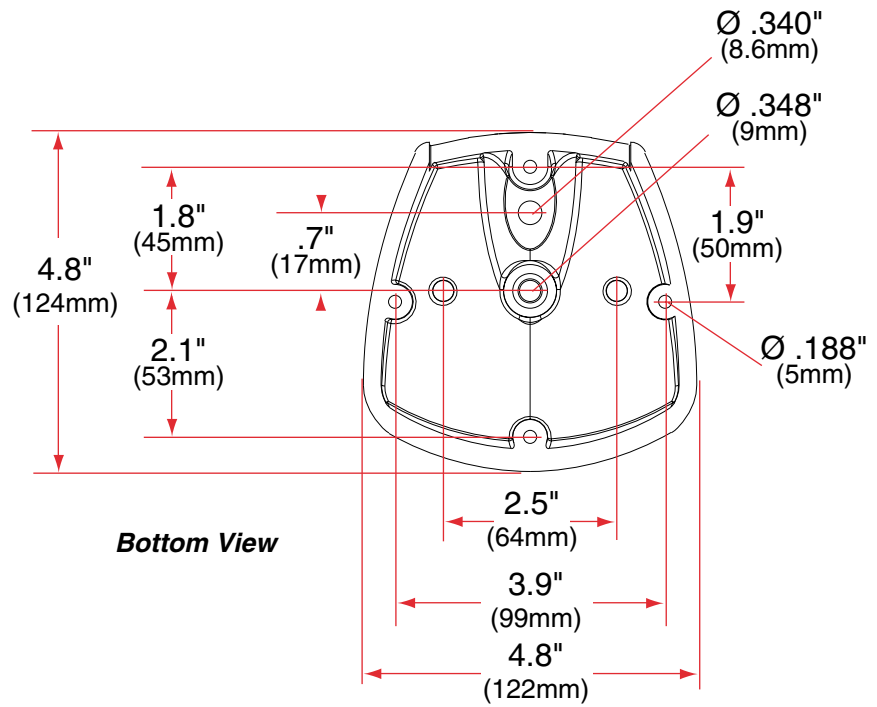
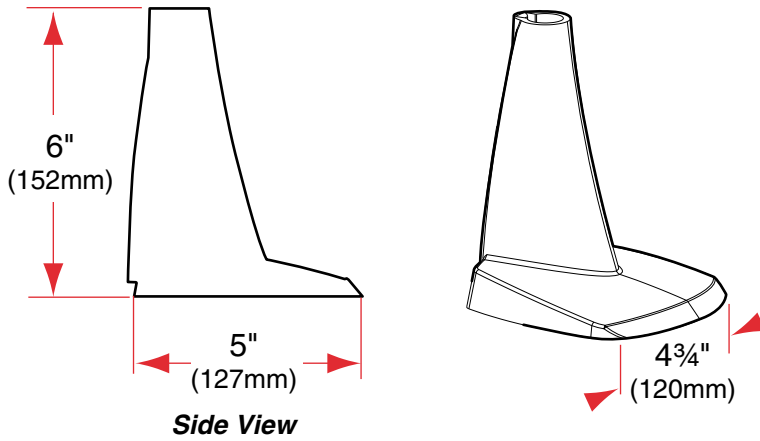
TROUBLE SHOOTING

Symptom	Probable Cause	Solution
9" Extension or Vertical Adjustment Arm is hard or too easy to rotate side-to-side	Improper adjustment.	Adjust the side-to-side "swing" of the 9" Extension or Vertical Adjustment Arm as described in Step 4b and 5.
Desk Clamp does not fit on worksurface	Surface is too thick	Surface exceeds the maximum thickness of 2-1/8". Contact Chief Manufacturing.

SPECIFICATIONS

Part Number	Description	Net Weight	Shipping Weight
FSA-020	Desk Clamp	5 lbs (2kg)	6 lbs (2kg)

DIMENSIONS



REPLACEMENT PARTS

Contact your Chief Manufacturing representative for details



Chief Manufacturing Inc.
12800 Hwy 13 S., Ste. 500
Savage, MN 55378 USA

Phone: 1-800-582-6480
Fax: 1-877-894-6918
www.chiefmfg.com