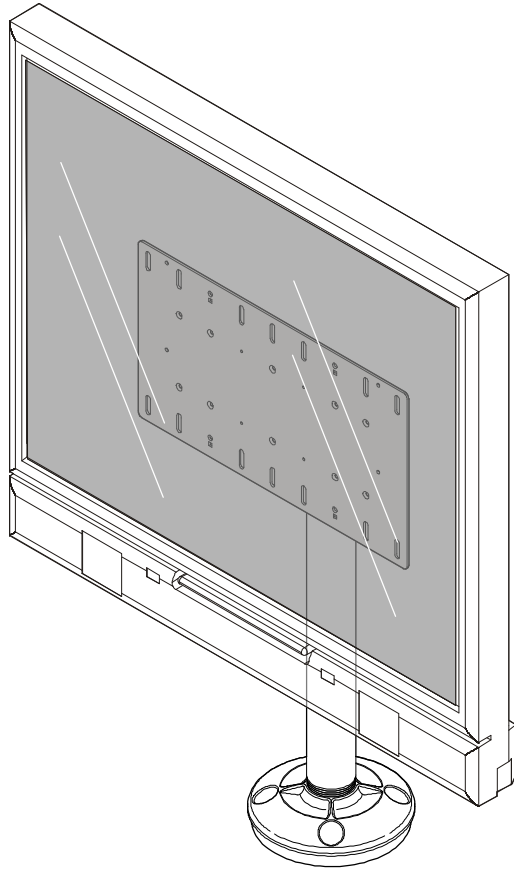

INSTALLATION INSTRUCTIONS



Swivel Stand Display Mount

DISCLAIMER

Milestone AV Technologies, Inc., and its affiliated corporations and subsidiaries (collectively, "Milestone"), intend to make this manual accurate and complete. However, Milestone makes no claim that the information contained herein covers all details, conditions or variations, nor does it provide for every possible contingency in connection with the installation or use of this product. The information contained in this document is subject to change without notice or obligation of any kind. Milestone makes no representation of warranty, expressed or implied, regarding the information contained herein. Milestone assumes no responsibility for accuracy, completeness or sufficiency of the information contained in this document.

! IMPORTANT WARNINGS AND CAUTIONS!

! WARNING: A WARNING alerts you to the possibility of serious injury or death if you do not follow the instructions.

! CAUTION: A CAUTION alerts you to the possibility of damage or destruction of equipment if you do not follow the corresponding instructions.

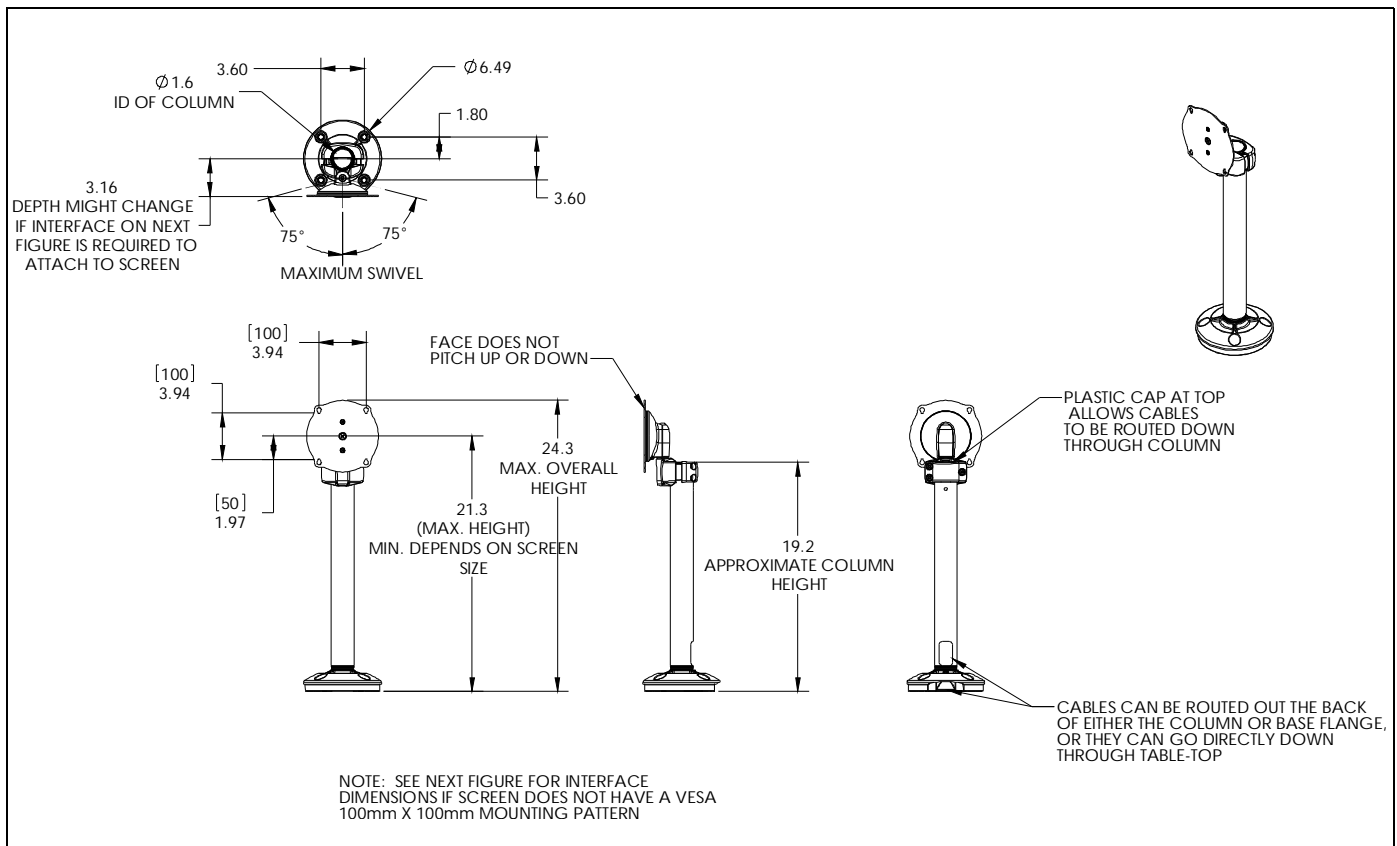
! WARNING: Failure to read, thoroughly understand, and follow all instructions can result in serious personal injury, damage to equipment, or voiding of factory warranty! It is the installer's responsibility to make sure all components are properly assembled and installed using the instructions provided.

! WARNING: Failure to provide adequate structural strength for this component can result in serious personal injury or damage to equipment! It is the installer's responsibility to make sure the structure to which this component is attached can support five times the combined weight of all equipment. Reinforce the structure as required before installing the component.

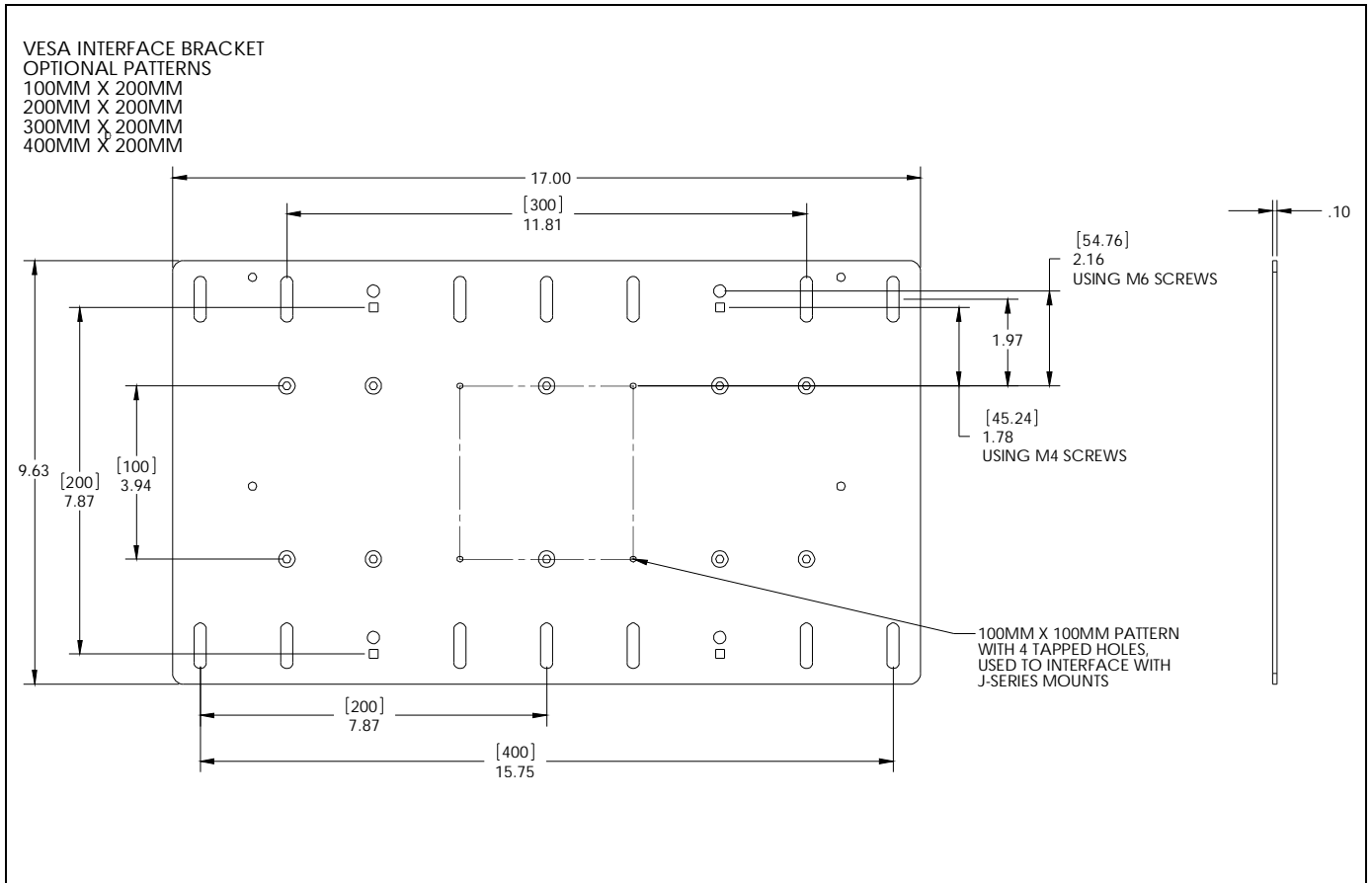
! WARNING: Exceeding the weight capacity can result in serious personal injury or damage to equipment! It is the installer's responsibility to make sure the combined weight of all components attached to this accessory does not exceed 75 lbs (34 kg).

Chief® is a trademark of Milestone AV Technologies, Inc. All rights reserved.

DIMENSIONS



DIMENSIONS - cont'd



LEGEND

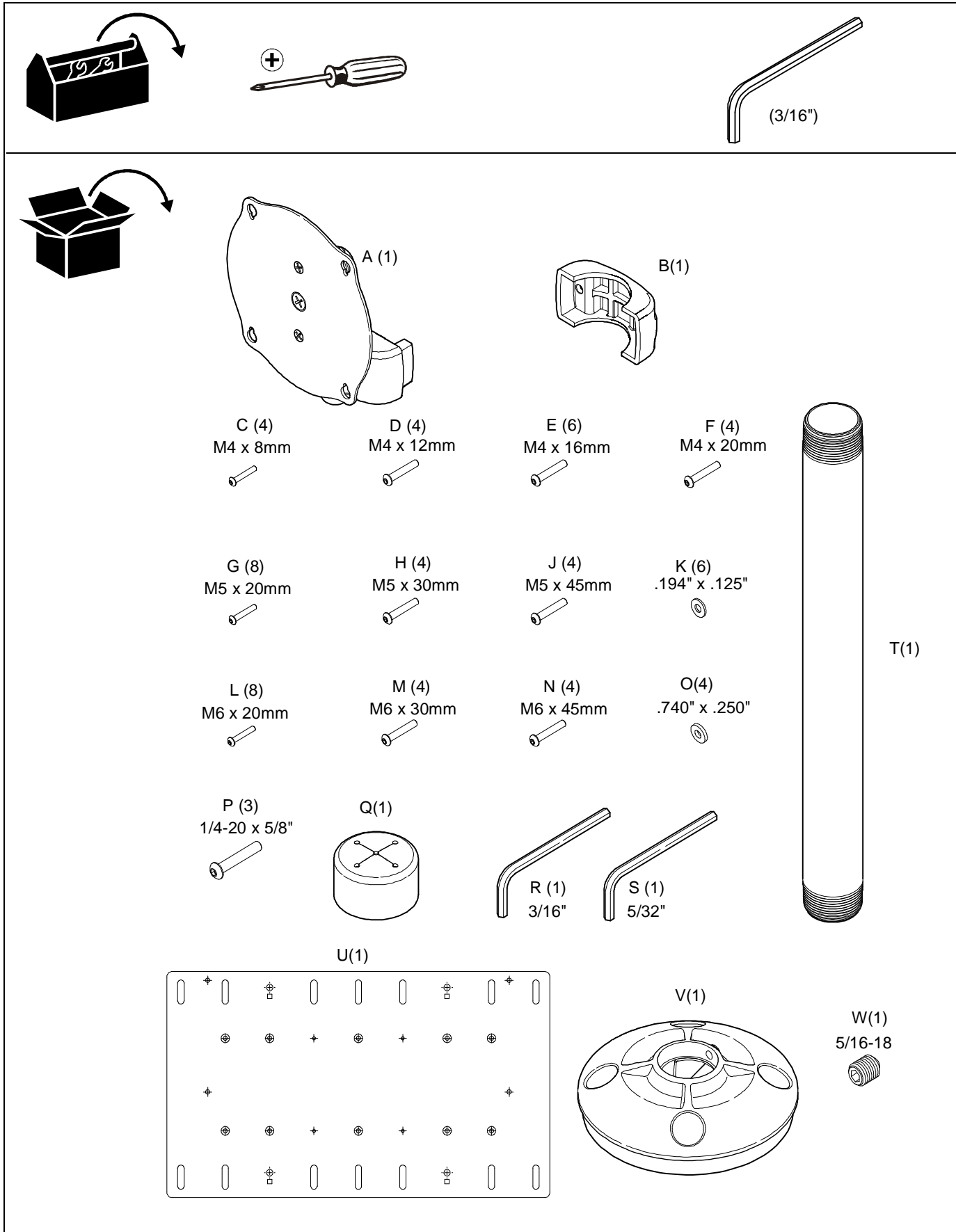
	Tighten Fastener
	Apretar elemento de fijación
	Befestigungsteil festziehen
	Apertar fixador
	Serrare il fissaggio
	Bevestiging vastdraaien
Serrez les fixations	

	Hex-Head Wrench
	Llave de cabeza hexagonal
	Sechskantschlüssel
	Chave de cabeça sextavada
	Chiave esagonale
	Zeskantsleutel
Clé à tête hexagonale	

	Loosen Fastener
	Aflojar elemento de fijación
	Befestigungsteil lösen
	Desapertar fixador
	Allentare il fissaggio
	Bevestiging losdraaien
Desserrez les fixations	

	Phillips Screwdriver
	Destornillador Phillips
	Kreuzschlitzschraubendreher
	Chave de fendas Phillips
	Cacciavite a stella
	Kruiskopschroevendraaier
Tournevis à pointe cruciforme	

TOOLS REQUIRED FOR INSTALLATION AND PARTS



Assembly And Installation



WARNING: IMPROPER INSTALLATION CAN LEAD TO DISPLAY FALLING CAUSING SERIOUS PERSONAL INJURY OR DAMAGE TO EQUIPMENT! DO NOT substitute hardware! Use only hardware provided by manufacturer.

1. Identify desired mounting location taking into consideration display size and mount range of motion.
2. Orient base (V) so that cable management opening is properly positioned. (See Figure 1)
3. Using a pencil, or similar marking tool, mark the location of mounting holes in base onto surface. (See Figure 1)
4. Drill four pilot holes, if using lag bolts or four thru holes if using bolts into the mounting surface at marked locations.
5. Reposition base over holes in mounting surface and secure base to mounting surface using either four 5/16" lag bolts or four 5/16" hex head cap screws, four flat washers, and four 5/16" nuts. (Length of lag bolts or cap screws is determined by thickness of mounting surface)

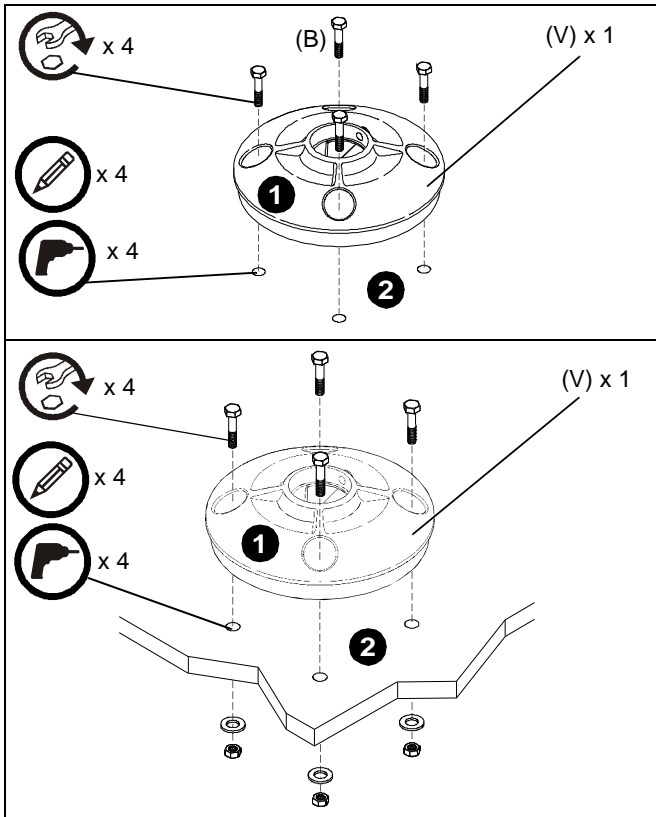


Figure 1

6. Thread mounting post (T) into base (V) until tight.



CAUTION: OVERTIGHTENING MOUNTING POST CAN DAMAGE POST OR BASE! DO NOT use a wrench to tighten mounting post. Tighten to hand tight only.

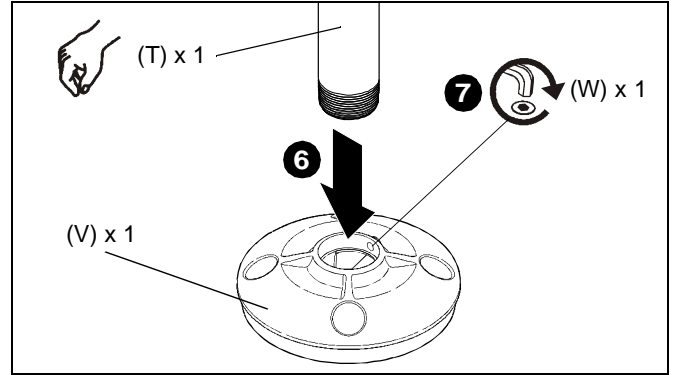


Figure 2

7. Using a hex wrench, tighten set screw (W) to secure mounting post (T) to base (V).
8. Orient front clamp (A) so that display mounting plate is facing approximate desired location. (See Figure 10)
9. Align front (A) and rear (B) clamps and loosely secure to one another using three button head cap screws (P). (See Figure 10)

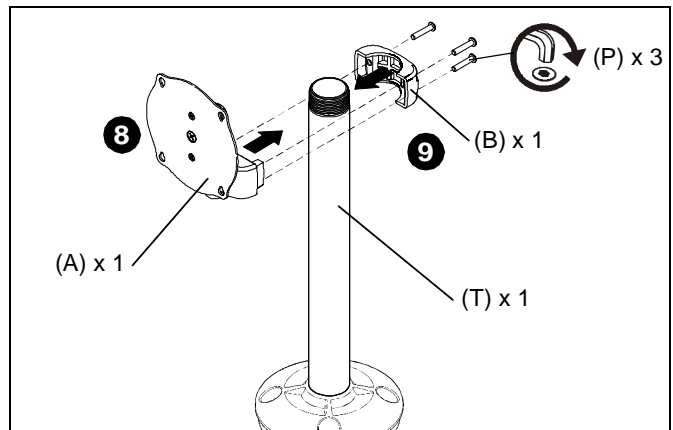


Figure 3

NOTE: Equally tighten screws (P) against rear clamp (B) and front clamp (A). (See Figure 4)

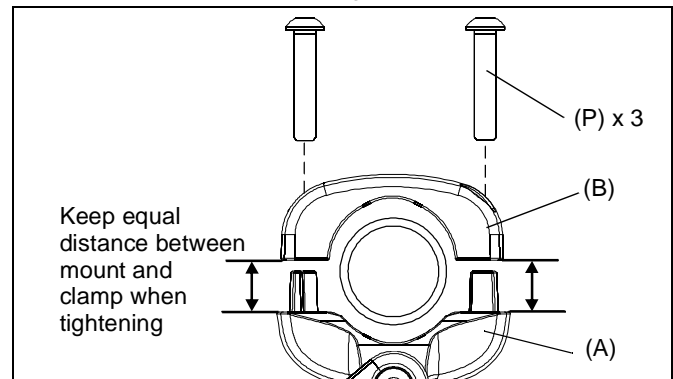


Figure 4

10. Secure rear clamp to front clamp by tightening three button head cap screws (P).

Display Installation

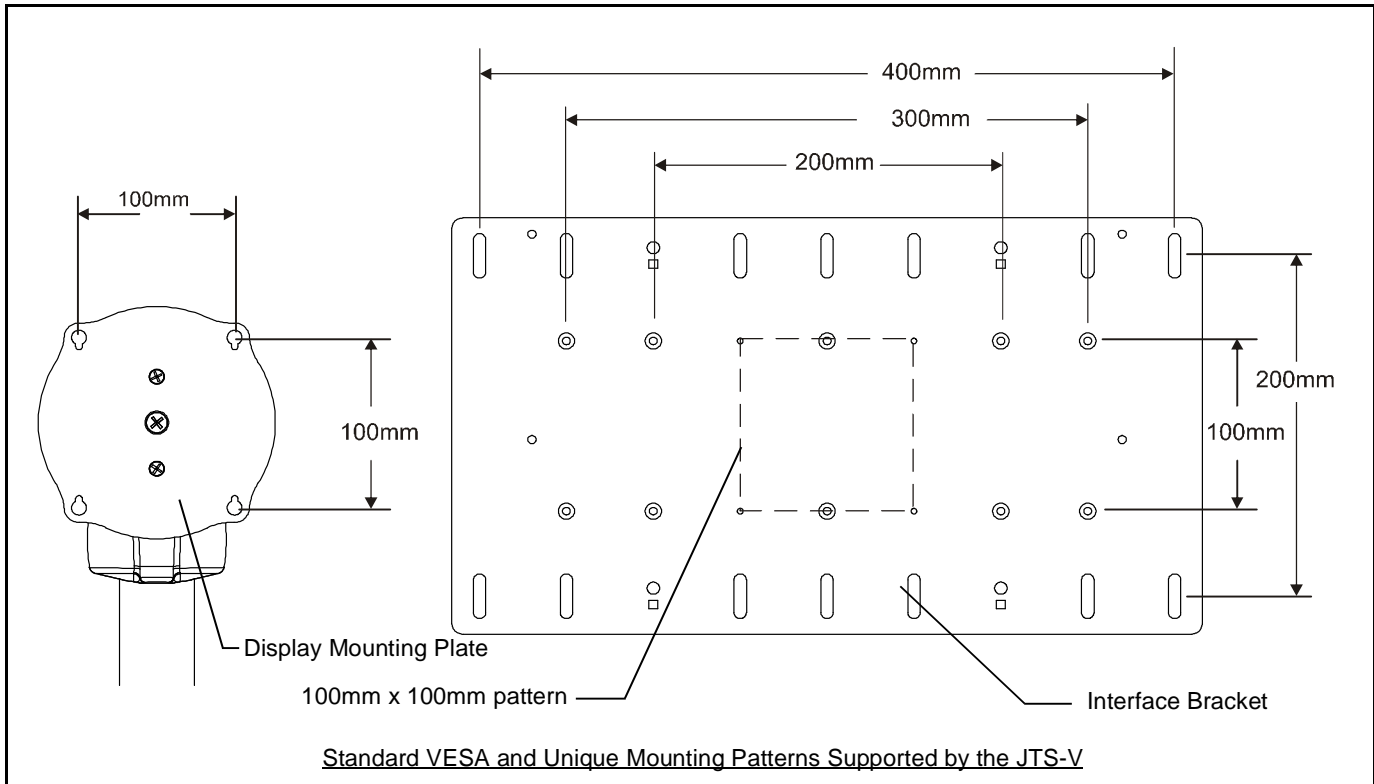


Figure 5

The JTS-V mount has been designed to accommodate multiple display mounting patterns through the use of an interface bracket.

If the display being installed has a 100mm x 100mm mounting pattern, the display can be mounted directly to the display mounting plate. (See Figure 5)

If the mounting pattern on the display is other than a 100mm x 100mm pattern the interface bracket must be used. (See Figure 5)

The interface bracket supports multiple display mounting patterns including:

- 200mm x 100mm
- 300mm x 100mm
- 300mm x 200mm
- 400mm x 200mm
- 200mm x 200mm

Hardware is provided to accommodate displays with M4 and M6 tapped mounting holes as well as flush and recessed mounting areas on the back of the display. (See Figure 6)

⚠ WARNING: IMPROPER INSTALLATION CAN LEAD TO DISPLAY FALLING RESULTING IN SEVERE PERSONAL INJURY OR DAMAGE TO EQUIPMENT! Make certain hardware is of proper size and length for mounting holes in display.

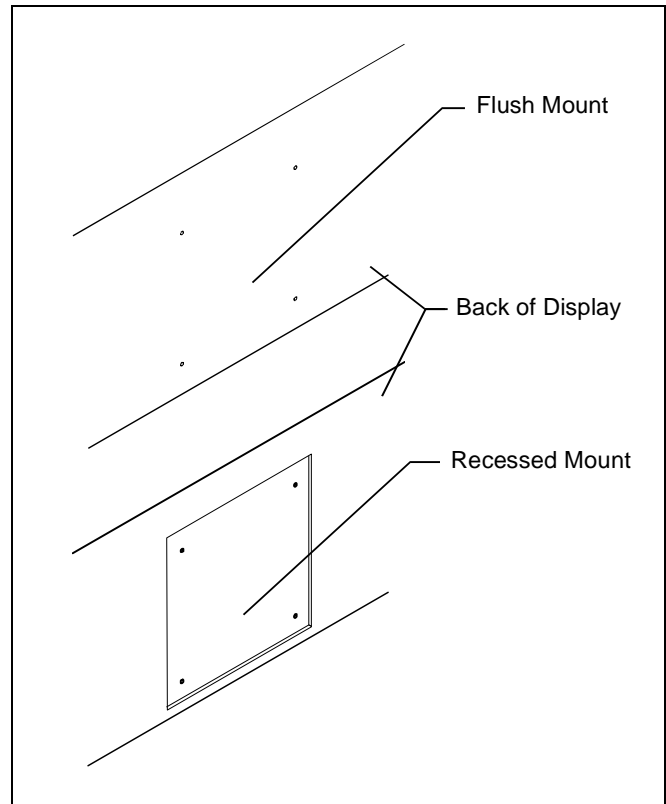


Figure 6

VESA 100 x 100 Pattern

1. Partially install two screws (D) into upper mounting holes in display back. (See Figure 7)

NOTE: Leave at least 1/8" of each screw protruding out back of display.

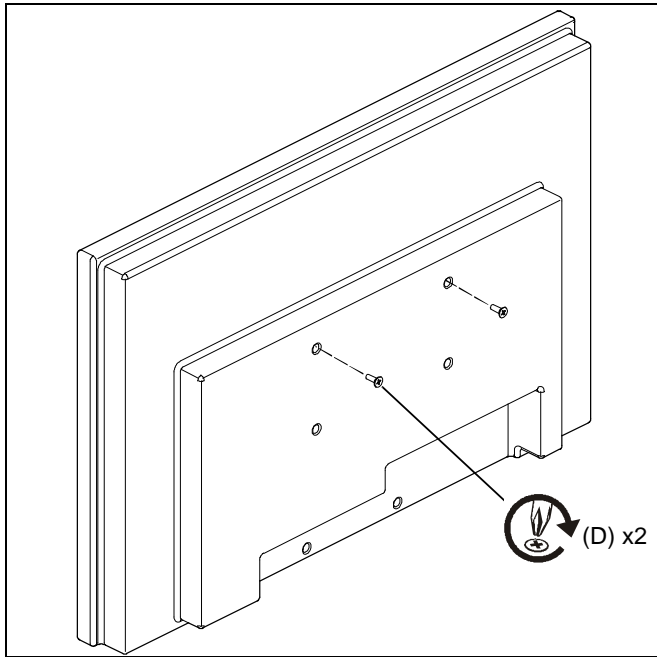


Figure 7

2. Align two screws in display back with upper teardrop mounting holes in mounting plate.
3. Place two screws in display into upper teardrop mounting holes in display mounting plate and lower display until screws are seated in lower area of teardrop mounting holes. (See Figure 8)
4. Install two screws (D) through display mounting plate and into lower mounting holes in display back. (See Figure 8)
5. Tighten all hardware.

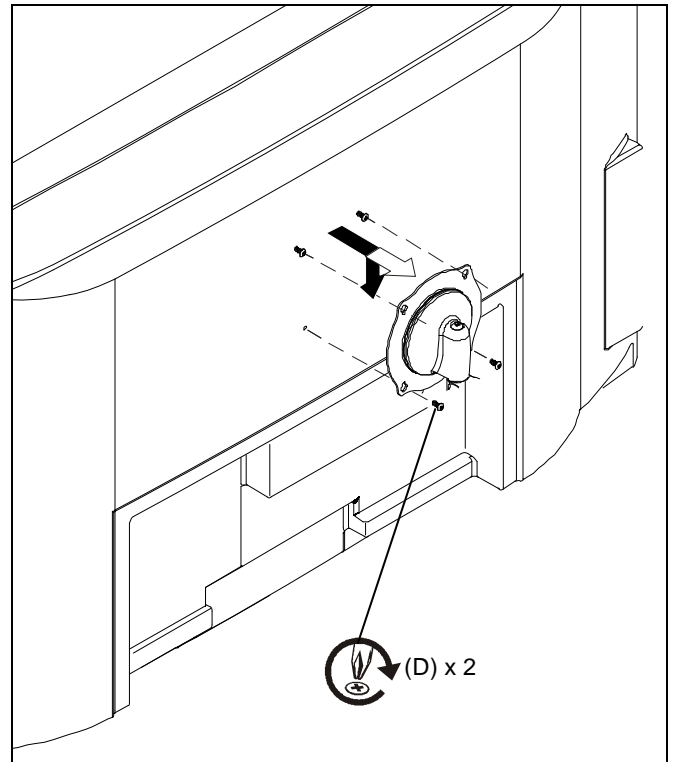


Figure 8

Other VESA Mounting Patterns

Attach Interface Bracket to Display

1. Lay display face down on a clean and dry flat surface.
2. Place .125" nylon spacers (K) over each mounting hole (.250" nylon spacers (O) can be used if extra space is needed).
3. Attach Interface Bracket (U) to display using appropriate screws (D, E, F, G, H, L, M, N). (See Figure 9)
4. Tighten all screws.

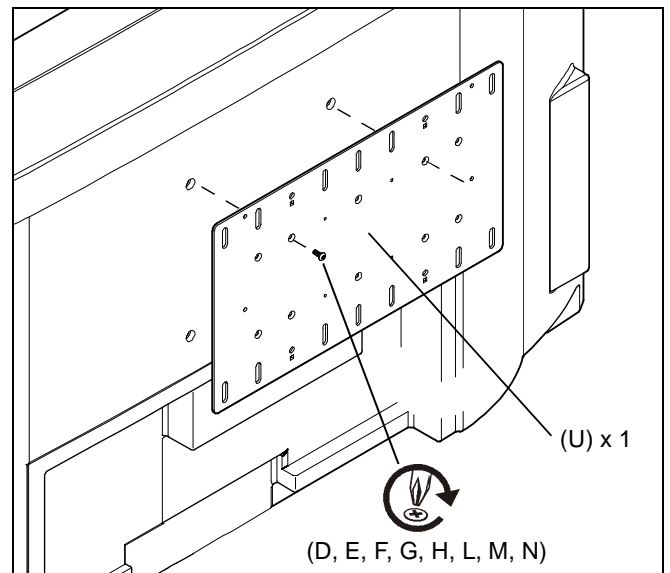


Figure 9

Attach Display to Mount

1. Start two Phillips pan head screws (C) into top mounting holes on interface bracket (X). (See Figure 10)
2. Align two screws in interface bracket (U) with upper mounting holes in Centris cup and lower display until screws are seated in lower area of teardrop mounting holes. (See Figure 10)

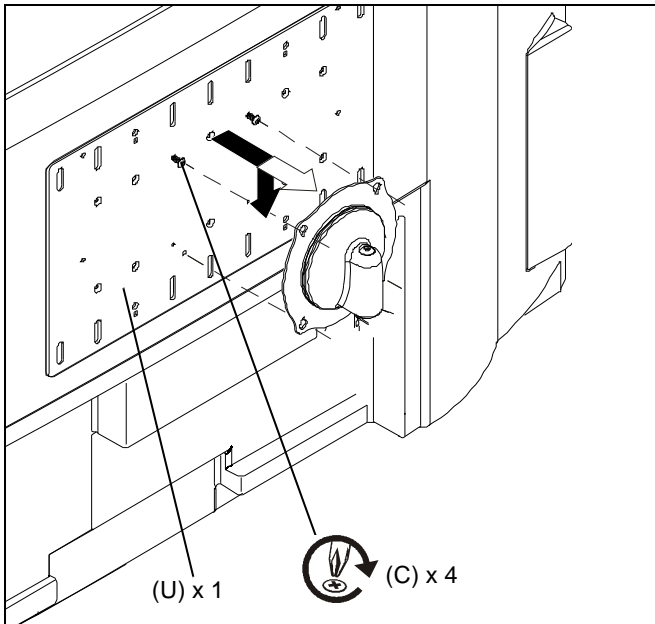


Figure 10

3. Hold display so that display back is against Centris cup and install two Phillips pan head machine screws (C) through lower mounting holes in Centris cup and into lower mounting holes in interface bracket (U). (See Figure 11)

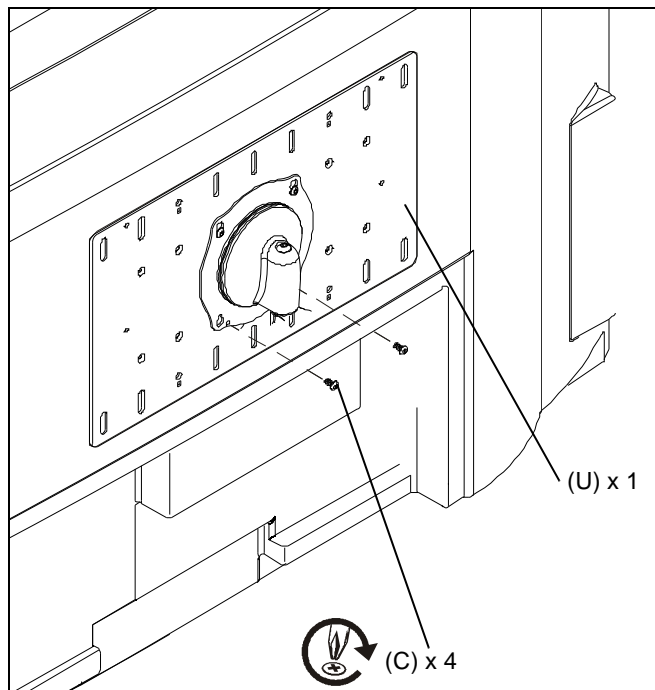


Figure 11

4. Route cables and wires to display.

Display Position Adjustment

To adjust the height of the display:

1. While holding the display to prevent it from sliding down post, loosen right button head cap screw and adjust display position.
2. Tighten button head cap screw.

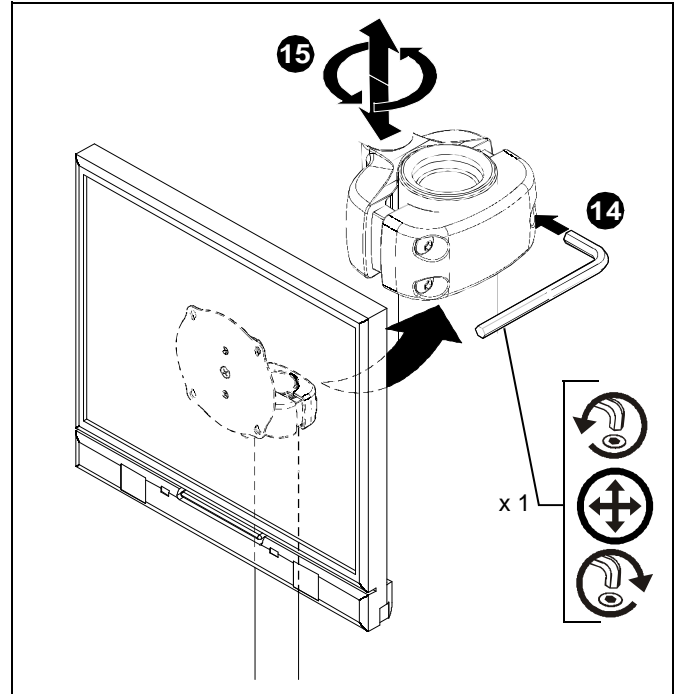


Figure 12



Chief Manufacturing, a division of
Milestone AV Technologies

8832-000192 Rev.A
©2008 Milestone AV Technologies
www.chiefmfg.com
04/08

USA/International	A 8401 Eagle Creek Parkway, Savage, MN 55378 P 800.582.6480 / 952.894.6280 F 877.894.6918 / 952.894.6918
Europe	A Fellenoord 130 5611 ZB EINDHOVEN, The Netherlands P +31 (0)40 2668620 F +31 (0)40 2668615
Asia Pacific	A Room 24F, Block D, Lily YinDu International Building LuoGang, BuJi Town, Shenzhen, CHINA. 深圳市布吉罗岗村百合银都国际大厦D栋24F P +86-755-8996 9226 F +86-755-8996 9217