

---

# INSTALLATION INSTRUCTIONS

---

## Small Flat Panel

## Height-Adjustable, Extended Pitch

## Swing Arm Desk Mount

## Model KCE-110

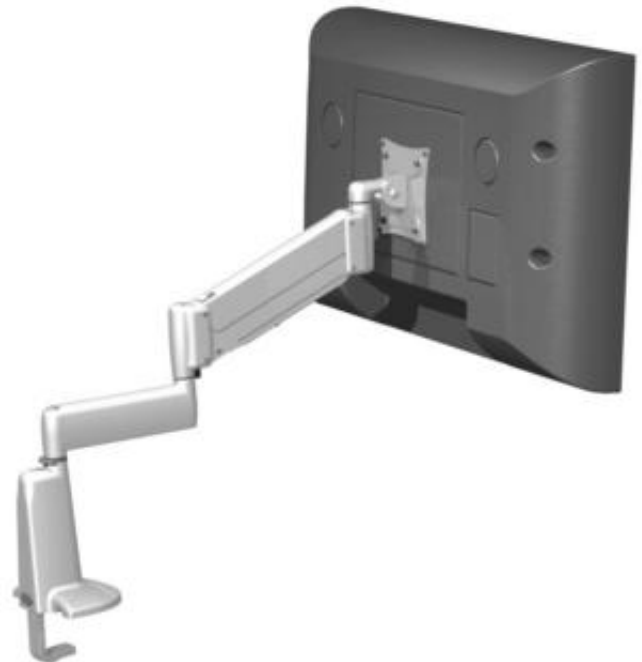
The KCE dual swing arm wall mount is designed to provide a broad range of viewing for Small Flat Panel Displays.

The KCE can be easily rotated laterally. The lift arm has 13 inches of vertical travel, 6-1/2" up from center and 6-1/2" down from center.

On standard installations, the KCE is wall-mounted.

The mount will safely hold a display weighing up to 20 lbs (9 kg) maximum. The display can be up to 30 inches wide.

The KCE-110 accommodates all VESA® 75mm/100mm compliant displays.



### BEFORE YOU BEGIN

---

**WARNING:** Thoroughly read and understand all Warnings and precautions (see page 2), instructions and illustrations before you begin mount installation. Failure to install the mount properly could lead to serious personal injury, damage to equipment, and may void the factory warranty.

- The mount is designed to be installed using wall studs or supporting framework. The fasteners used to anchor the mount must be capable of supporting five times the total weight of the equipment.
- The maximum weight to be installed on the mount is 20 pounds (9 Kg).
- If you have any questions about this installation, contact Chief Manufacturing.

®Chief is a registered trademark of Milestone AV Technologies. All rights reserved.



Our Mounts. Your Vision.

Chief Manufacturing, a products division of  
Milestone AV Technologies  
8401 Eagle Creek Parkway, Savage, MN 55378  
00.582.6480 / 952.894.6280 • F:877.894.6918 / 952.894.6918

8832-8000120 RevC  
©2009 Milestone AV Technologies,  
a Duchossois Group Company  
[www.chiefmfg.com](http://www.chiefmfg.com)

04/09



**IMPORTANT WARNINGS AND CAUTIONS!**

**WARNING:** A WARNING alerts you to the possibility of serious injury or death if you do not follow the instructions.

**CAUTION:** A CAUTION alerts you to the possibility of damage or destruction of equipment if you do not follow the corresponding instructions.

**WARNING:** Improper installation can result in serious personal injury! Make sure that the structural members can support a weight factor five times the total weight of the equipment. If not, reinforce the structure before installing the mount.

**WARNING:** Be aware also of the potential for personal injury or damage to the unit if it is not adequately mounted.

**WARNING:** The installer is responsible for verifying that the structure to which the mount is anchored will safely support five times the combined load of all attached components or other equipment.

**WARNING:** The weight of the display placed on the mount must not exceed 20 lbs. (9 kg), the maximum load capacity of the mount.

**WARNING:** Watch for pinch points. Do not put your fingers between movable parts.

**WARNING:** Make sure the mount and brackets are correctly oriented.

**WARNING:** Make sure the latching device securing the display is completely engaged at all times except when removing or installing the display. The latching device must be completely engaged when installing/ removing cables.

**CAUTION:** Check the unit for shipping damage before you begin the installation.

**CAUTION:** Use only the mounting screws provided and DO NOT OVER TIGHTEN mounting screws.

**CONTENTS**

IMPORTANT WARNINGS AND CAUTIONS! ..... 2  
 TOOLS REQUIRED FOR INSTALLATION ..... 2  
 PARTS ..... 3  
 INSTALLATION ..... 4  
     Install Mount to Desk ..... 4  
     Display Mounting ..... 5  
         Flush Mount 75mm x 75mm  
         Display Mounting Pattern ..... 5  
         Flush Mount 100mm x 100mm  
         Display Mounting Pattern ..... 5  
         Recessed Mount 75mm x 75mm  
         Display Mounting Pattern ..... 6  
         Recessed Mount 100mm x 100mm  
         Display Mounting Pattern ..... 6  
 Cable Management ..... 7  
 ADJUSTMENTS ..... 7  
     Spherical, Arm, and Lateral Movement  
     Tension Adjustments ..... 7  
     Lift Arm Tension Adjustment ..... 7

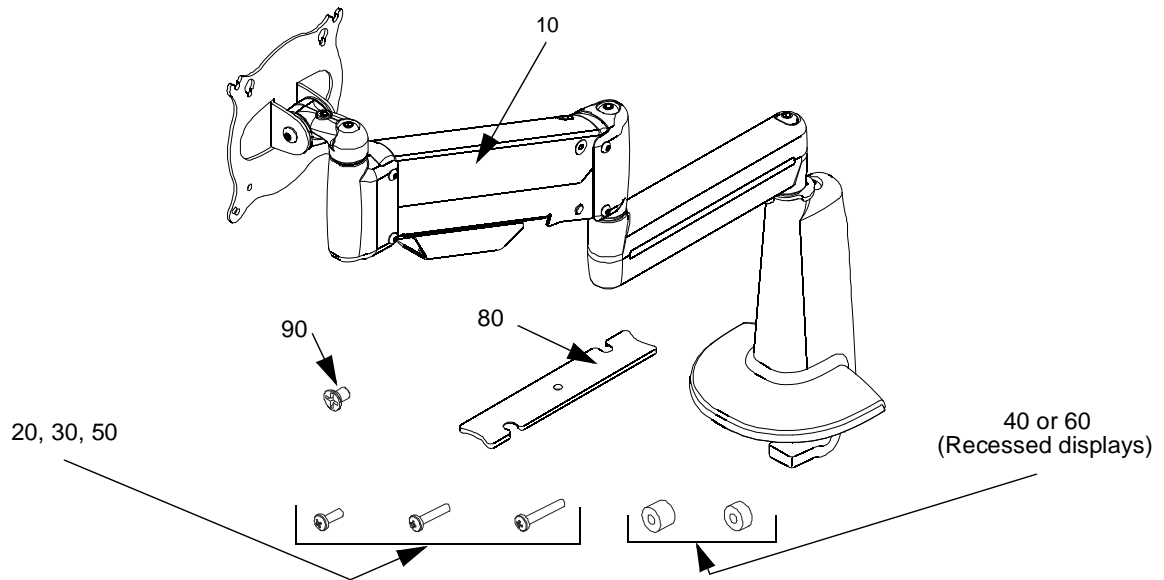
**TOOLS REQUIRED FOR INSTALLATION**

- Phillips screwdrivers, No. 1 and No. 2
- 3/16" Allen wrench
- Drill and drill bits

**NOTE:** Other tools may be required depending on your method of installation.

**PARTS**

**CAUTION:** Check the unit for shipping damage before you begin the installation.



**Figure 1: KCE Parts**

PART	PART NAME	QTY	NOTES
10	Arm, Dual, Height-Adjustable	1	
20	SCREW, Phillips Pan Head, M4 x 12 MM	4	Flush Mount
30	SCREW, Phillips Pan Head, M4 x 20 MM (use with 40) *	4	Recessed Mount
40	SPACER, 3/8" (M4 ID)	4	
50	SCREW, Phillips Pan Head, M4 x 60 MM (use with 60) **	4	
60	SPACER, 3/4" (M4 ID)	4	
70	NOT USED		
80	COVER, Swing Arm	1	
90	SCREW, Cover Mounting, Phillips Flat Head, #8 x 5mm	2	
*Use M4 x 20mm screws (30) with spacers (40) for recessed applications. **Use M4 x 30mm screws (50) with spacers (60) for recessed applications.			

## INSTALLATION

### Display Mounting

There are two methods of mounting a display to the KCE-110.

- Flush VESA® mount, or
- Recessed VESA mount.
- 

**CAUTION:** If display uses a screw size different from those included in the kit, DO NOT use the screws provided with the display. Using the wrong screws could result in damage to your monitor. ALWAYS use the hardware included in the kit when installing the mount and display.

#### Flush VESA Mount Installation

1. Place display face down on a clean dry surface.
2. Align holes in faceplate with mounting holes in display back. (see figure 2)
3. Secure mount to display using four M4 x 12mm phillips pan head screws (20).
4. Install mount with display to desktop following the instructions in **Install Mount to Desk** section.

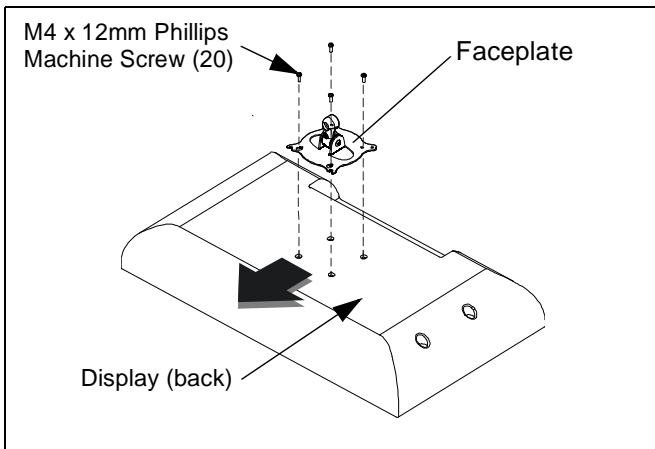


Figure 2: VESA® Flush Mount

#### Recessed VESA® Mount Installation

The depth of the recessed area on the display varies depending upon the manufacturer. Use one of the following screw / spacer combinations depending upon the depth of the recess in display:

- (30 with 40)
  - (50 with 60)
1. Place display face down on a clean dry surface.
  2. Select four phillips machine screws (30/50).
  3. Select four spacers (40/60).

4. Set four spacers (40/60) over the four mounting holes on back of display. (see figure 3)
5. Align holes in faceplate with holes in four spacers (40/60). (see figure 3)
6. Install four phillips machine screws (30/50) through faceplate and spacers (40/60), and into mounting holes of display.
7. Tighten four phillips machine screws (30/50).
8. Install mount with display to desktop following the instructions in **Install Mount to Desk** section.

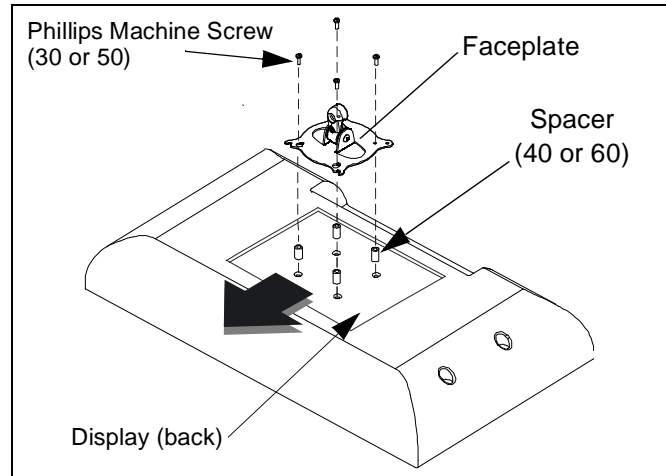


Figure 3: VESA® Recessed Mount

#### Install Mount to Desk

To secure the KCE-110 to desktop:

1. Slide flanged area of mount base onto desktop until flange back is seated against desk edge. (see figure 4)
2. Turn mounting screw clockwise using 3/16" allen wrench until mounting bar is firmly seated against desk bottom. (see figure 4)

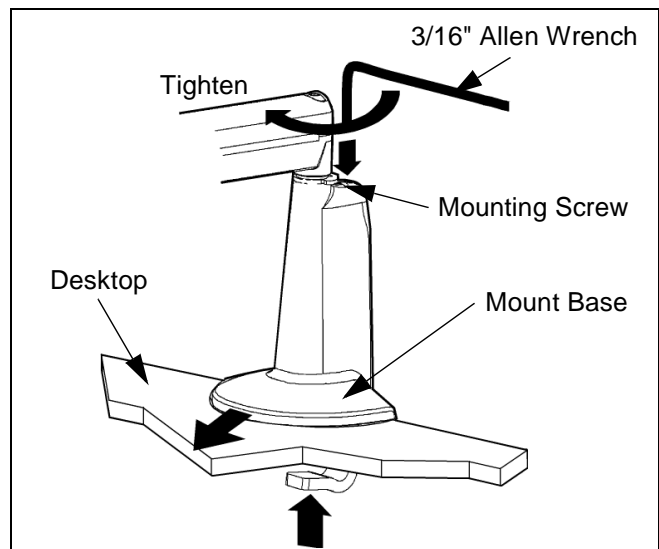
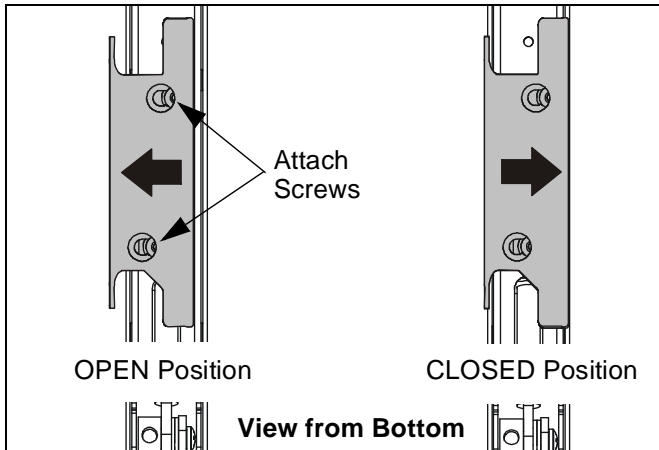


Figure 4: Install KCE-110 on Desktop

**Cable Management**

1. Attach all cables to display.
2. Open the cable management bracket by sliding it towards the edge of the arm (see figure 5).

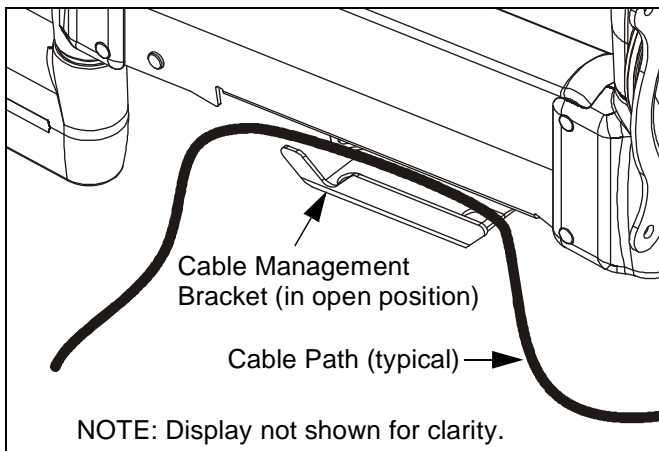
**NOTE:** If necessary, cable management bracket attach screws may be loosened using hex key.



**Figure 5: Height Adjustable Arm - Cable Management Bracket**

**CAUTION:** Ensure that adequate cable slack exists for movement of display, and that cables will not be pinched when bracket is closed.

3. Carefully insert cables into bracket (see figure 6).



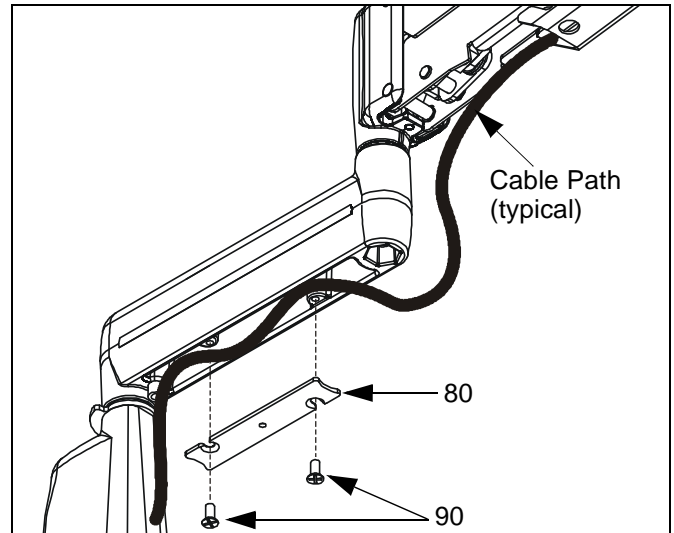
**Figure 6: Height Adjustable Arm - Cable Path**

4. Close cable management bracket by sliding it back towards the centerline of the arm (see figure 5).

**NOTE:** If necessary, cable management bracket attach screws may be tightened using hex key.

**CAUTION:** Ensure that adequate cable slack exists for movement of display, and that cables will not be pinched by installation of cover (80) or screws (90).

5. Carefully insert cables in cavity located in lower portion of mount arm (see figure 7).
6. Using Phillips screwdriver, install cover (80) with two screws (90).



**Figure 7: Static Arm - Cable Path**

7. Installation is complete.

**ADJUSTMENTS**

**Spherical, Arm, and Lateral Movement Tension Adjustments**

**CAUTION:** Over-tightening adjustment bolt will cause excessive wear and may distort adjustment components.

To adjust tension of spherical, arm, and lateral movement:

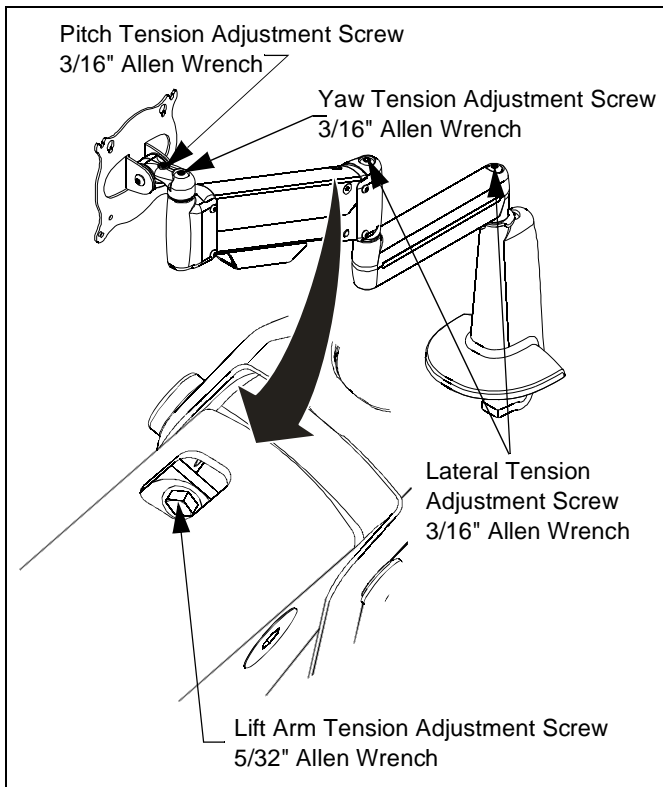
1. Slightly tighten or loosen the appropriate tension adjustment screw using a 3/16" allen wrench. (see figure 8)
2. Check for desired tension.
3. Repeat procedure until desired tension is achieved.

## Lift Arm Tension Adjustment

**CAUTION:** Over-tightening tension bolt will cause excessive wear and may distort adjustment components.

To adjust lift arm tension:

1. Raise or lower the lift arm until tension adjustment screw appears in the opening. (see figure 8)
2. Turn tension adjustment screw, using a 5/32" Allen wrench, as follows:
  - To increase lift arm tension, turn the tension adjustment bolt one to two turns counterclockwise.
  - To decrease lift arm tension, turn the tension adjustment bolt one to two turns clockwise.
3. Raise or lower the lift arm to check for desired tension.
4. Repeat procedure until desired tension is achieved.



**Figure 8: Tension Adjustments**



