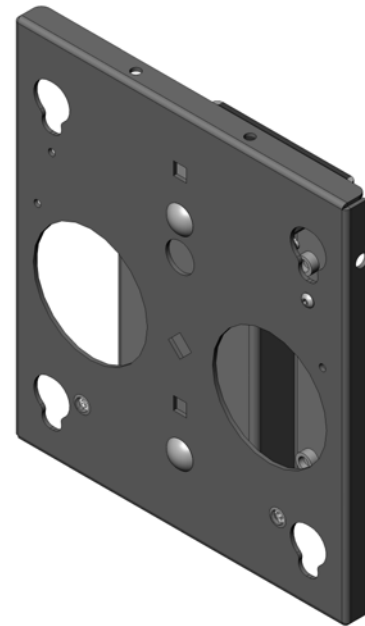

INSTALLATION INSTRUCTIONS

Medium Flat Panel Single Fixed Mounting Head (MAC-160)

The MAC-160 Single Fixed Mounting Head was designed for use with a medium flat panel and Chief's PFS Floor Stand.



MAC-160

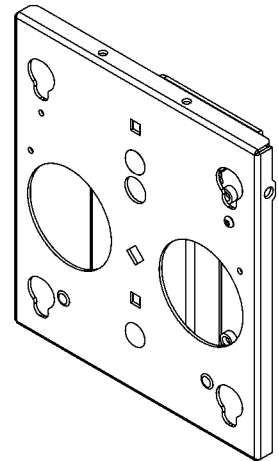
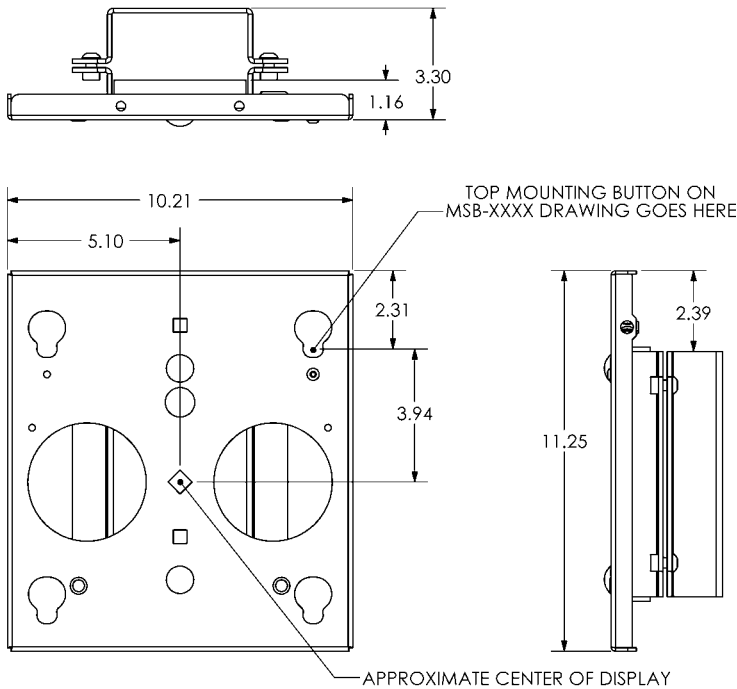
BEFORE YOU BEGIN

- **CAUTION:** To prevent damage to your display and the single post floor stand (and the MAC-160), which could affect or void the Factory warranty, thoroughly study all instructions and illustrations before you begin to install the mount. Pay particular attention to the Warnings and Cautions in this document.
- The maximum weight capacity to be installed on the MAC-160 and dual pole floor stand is 100 lbs (45.5 kg).
- If you have any questions about this installation, contact Chief Manufacturing at 1-800-582-6480.

! IMPORTANT WARNINGS and CAUTIONS!

WARNING	A WARNING alerts you to the possibility of serious injury or death if you do not follow the instructions.
CAUTION	A CAUTION alerts you to the possibility of damage or destruction of equipment if you do not follow the corresponding instructions.
• WARNING	Be aware of the potential for personal injury or damage to the equipment if it is not adequately mounted.
• WARNING	The weight of the display placed on the MAC-160 and single post floor stand must not exceed 100 lbs (45.5 kg).
• WARNING	Watch for pinch points. Do not put your fingers between movable parts.
• CAUTION	Check the unit for shipping damage before you begin the installation.

DIMENSIONAL DRAWING



NOTE: CUSTOM INTERAFCE BRACKET NOT SHOWN. THE CUSTOM INTERFACE BRACKET NEEDED FOR YOUR DISPLAY WILL ADD BETWEEN 1/2" AND 2" IN DEPTH AND MAY AFFECT LOCATION OF DISPLAY ON THE MOUNT.

SEE MSB-XXXX DRAWING ALSO.

CONTENTS

DIMENSIONAL DRAWING.....2
 TOOLS REQUIRED FOR INSTALLATION3
 INSPECT THE UNIT BEFORE INSTALLING3
 PARTS LIST.....3
 PARTS3
 INSTALLATION.....4
 Attach MAC-160 to Floor Stand4
 Mount the Display4
 Roll Tension Adjustment.....6
 REMOVE THE DISPLAY6

PARTS LIST

Unpack the shipping carton and check for the contents listed in Table 1 and shown in Figure 1.

Table 1. Parts List

REF	DESCRIPTION	QTY
10	SINGLE FIXED MOUNTING HEAD	1
20	SCREW, button head cap, 5/16 x 1/2"	4
30	PLATE, mounting, front, PFS	1
40	HEX KEY, 5/32"	1

TOOLS REQUIRED FOR INSTALLATION

- 5/32" Hex wrench (provided)

NOTE: Other tools may be required depending on your method of installation.

INSPECT THE UNIT BEFORE INSTALLING

WARNING: Watch for pinch points. Do not put your fingers between movable parts.

1. Carefully inspect the mount for shipping damage. If any damage is apparent, call your carrier claims agent and do not continue with the installation until the carrier has reviewed the damage.

NOTE: Read all instructions before starting installation.

2. Lay out components to ensure you have all the required parts before proceeding (see Figure 1). If you are missing any of the listed parts, contact Customer Service at: 1-800/582-6480.

PARTS

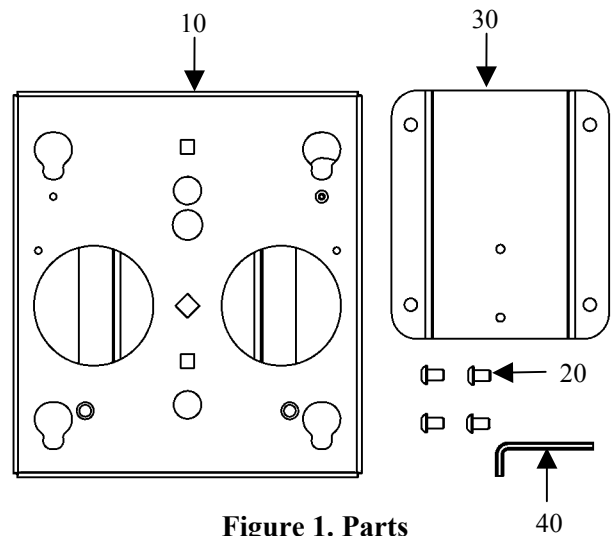


Figure 1. Parts

INSTALLATION

To install the MAC-160 assembly, do the following:

Attach MAC-160 to Floor Stand

WARNING: Exercise caution when lifting the MAC-160 assembly onto the floor stand post to avoid personal injury.

1. Using the 5/32" hex wrench (40), attach the front plate (30) and mounting head (10) of the MAC-160 onto the floor stand post using four button head cap screws (20) as shown in Figure 2.
2. Adjust the MAC-160 (10) to the desired height on the floor stand post.
3. Tighten the cap screws.

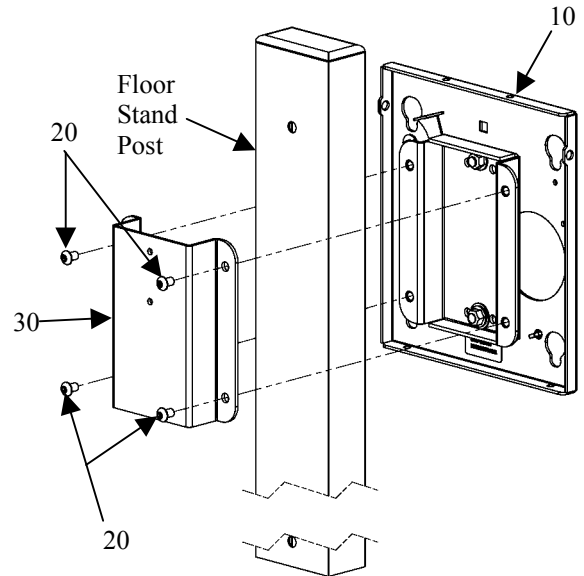


Figure 2. Attach MAC-160 to Floor Stand Post

Mount the Display

1. Following the instructions for mounting the MSB interface bracket of your specific plasma display panel, install the mounting bracket on your plasma display panel (see Figure 3).

NOTE: Make sure power is not supplied (turned off) to the display and the Q-latch is in the unlocked (open) position before attempting to mount the display (see Figure 3).

2. With an assistant, lift the display up to the mount.

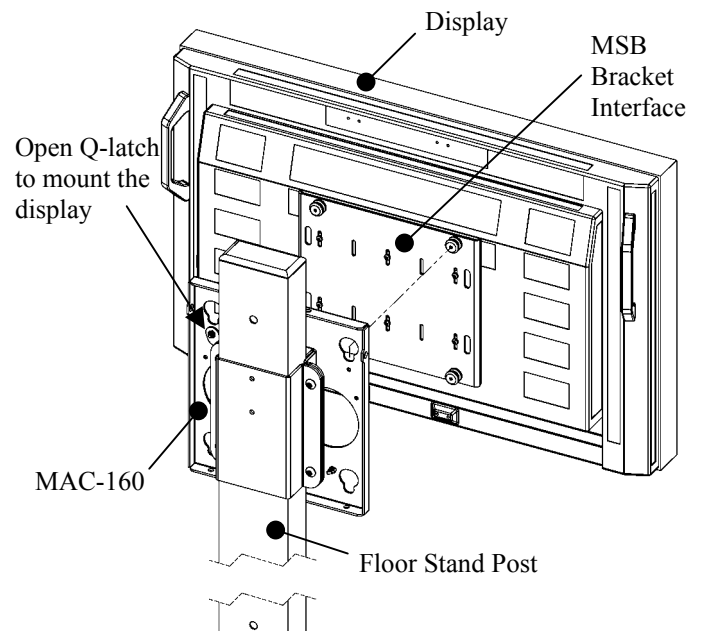


Figure 3. Mount the Display



Figure 4. Open Q-Latch

INSTALLATION (*Cont'd*)

Mount the Display (*Continued*)

3. Slide the display down over the mounting plate of the MAC-160. Make sure mounting buttons (on MSB interface bracket) fully engage all the teardrop slots on the mounting plate (see Figure 5).
4. Secure the mounting bracket to the MAC-160 by completely engaging the Q-latch in the locked (closed) position (see Figure 6).

WARNING: Make sure the Q-latch is completely engaged at all times except when removing the display.

NOTE: A padlock may be used on the Q-latch for increased security.

5. Connect and secure power/audio/video cables (not shown).

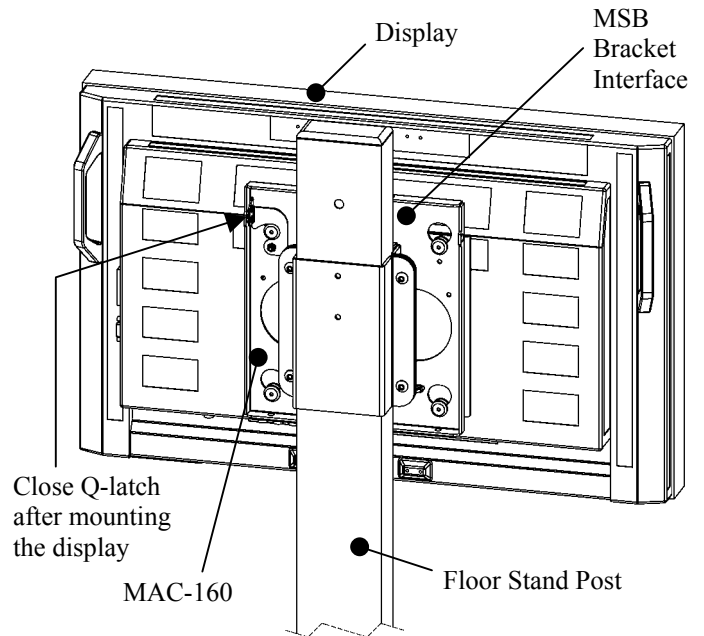


Figure 5. Engage Q-Latch with Mounting Buttons

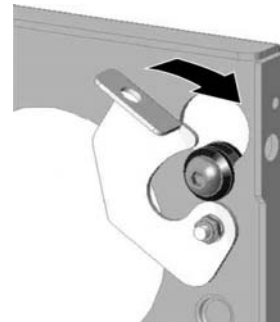


Figure 6. Close Q-Latch

INSTALLATION (Cont'd)

Roll Tension Adjustment

The faceplate on MAC-160 is designed to provide 2 degrees of roll adjustment (see Figure 7). Roll adjustment is accomplished by shifting the faceplate, right or left, as needed until the faceplate is level.

NOTE: Roll tension is preset at the factory. If the display does not remain in the desired position, perform the roll tension adjustment procedure.

To adjust roll tension, do the following:

1. Perform the “REMOVE THE DISPLAY” procedure to make the roll tension adjustment nuts accessible (see Figure 8).
2. Locate roll adjustment nuts on the back of the faceplate.
3. As needed, loosen or tighten the roll adjustment nuts (see Figure 8).
4. Perform the “Mount the Display” procedure to reinstall the display on the MAC-160.

REMOVE THE DISPLAY

1. Disconnect power/audio/video cables.
2. Disengage (lower) the Q-latch.
3. With an assistant, lift the display from the MAC-160.

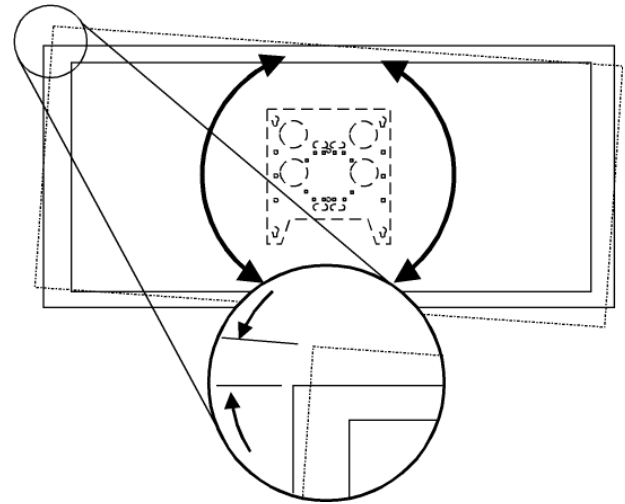


Figure 7. Roll Adjustment – Illustration

Roll Tension Adjustment Nuts

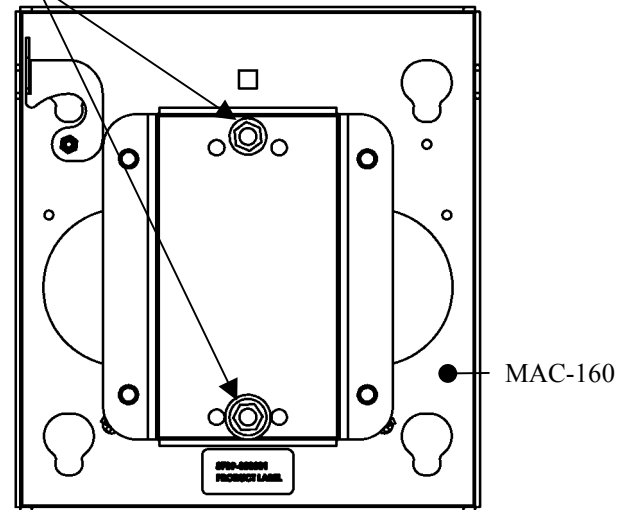


Figure 8. Adjust Roll Tension on Faceplate