
INSTALLATION INSTRUCTIONS

Desk Clamp Accessory

 **CHIEF**[®]

MSPDARKSA1002

DISCLAIMER

CSAV, Inc., and its affiliated corporations and subsidiaries (collectively, "CSAV"), intend to make this manual accurate and complete. However, CSAV makes no claim that the information contained herein covers all details, conditions or variations, nor does it provide for every possible contingency in connection with the installation or use of this product. The information contained in this document is subject to change without notice or obligation of any kind. CSAV makes no representation of warranty, expressed or implied, regarding the information contained herein. CSAV assumes no responsibility for accuracy, completeness or sufficiency of the information contained in this document.



IMPORTANT WARNINGS AND CAUTIONS!



WARNING: A WARNING alerts you to the possibility of serious injury or death if you do not follow the instructions.



CAUTION: A CAUTION alerts you to the possibility of damage or destruction of equipment if you do not follow the corresponding instructions.



WARNING: Failure to read, thoroughly understand, and follow all instructions can result in serious personal injury, damage to equipment, or voiding of factory warranty! It is the installer's responsibility to make sure all components are properly assembled and installed using the instructions provided.



WARNING: Failure to provide adequate structural strength for this component can result in serious personal injury or damage to equipment! It is the installer's responsibility to make sure the structure to which this component is attached can support five times the combined weight of all equipment. Reinforce the structure as required before installing the component.



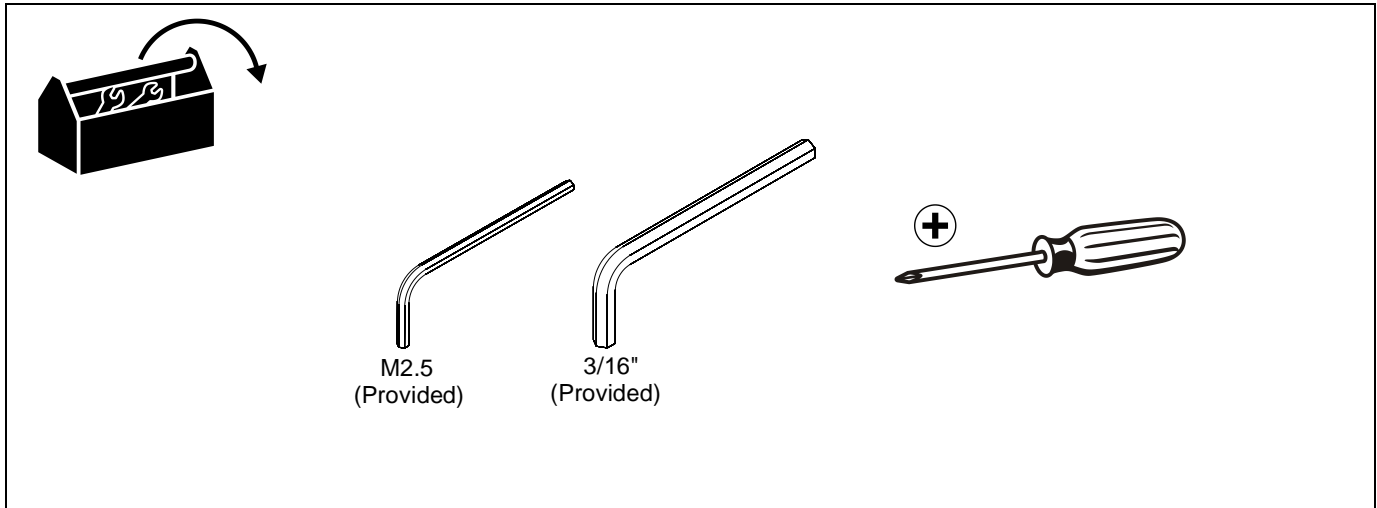
WARNING: Exceeding the weight capacity can result in serious personal injury or damage to equipment! It is the installer's responsibility to make sure the combined weight of all components located between the desk mount up to (and including) the display/projector does not exceed the weight rating of the desk mount.

LEGEND

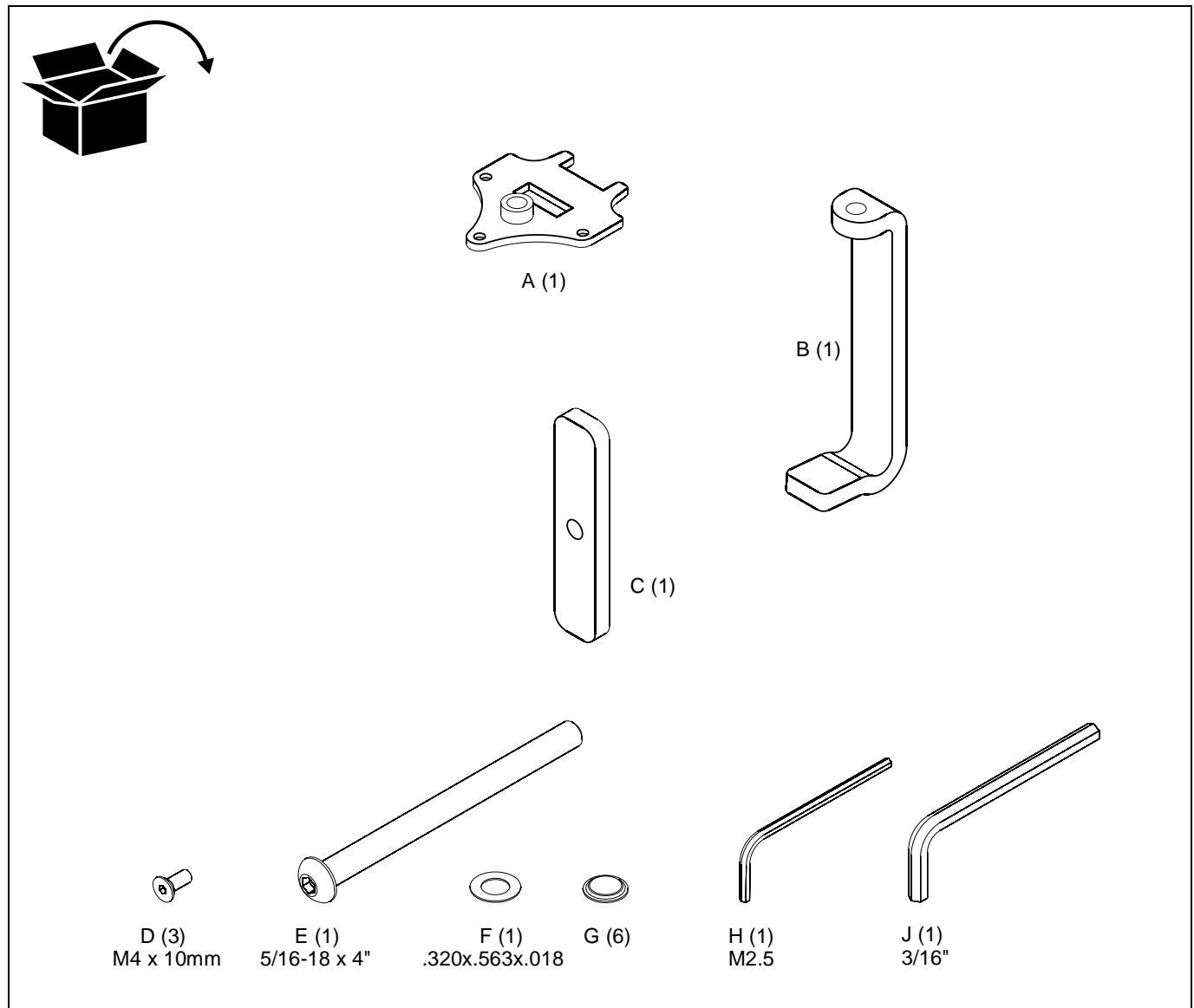
| | |
|-------------------------------|------------------------------|
| | Tighten Fastener |
| | Apretar elemento de fijación |
| | Befestigungsteil festziehen |
| | Apertar fixador |
| | Serrare il fissaggio |
| | Bevestiging vastdraaien |
| Serrez les fixations | |
| | Loosen Fastener |
| | Aflojar elemento de fijación |
| | Befestigungsteil lösen |
| | Desapertar fixador |
| | Allentare il fissaggio |
| | Bevestiging losdraaien |
| Desserrez les fixations | |
| | Phillips Screwdriver |
| | Destornillador Phillips |
| | Kreuzschlitzschraubendreher |
| | Chave de fendas Phillips |
| | Cacciavite a stella |
| | Kruiskopschroevendraaier |
| Tournevis à pointe cruciforme | |
| | Open-Ended Wrench |
| | Llave de boca |
| | Gabelschlüssel |
| | Chave de bocas |
| | Chiave a punte aperte |
| | Steeksleutel |
| Clé à fourche | |
| | By Hand |
| | A mano |
| | Von Hand |
| | Com a mão |
| | A mano |
| | Met de hand |
| À la main | |
| | Hex-Head Wrench |
| | Llave de cabeza hexagonal |
| | Sechskantschlüssel |
| | Chave de cabeça sextavada |
| | Chiave esagonale |
| | Zeskantsleutel |
| Clé à tête hexagonale | |

| | |
|--------------------|------------------------|
| | Pencil Mark |
| | Marcar con lápiz |
| | Stiftmarkierung |
| | Marcar com lápis |
| | Segno a matita |
| | Potloodmerkteken |
| Marquage au crayon | |
| | Drill Hole |
| | Perforar |
| | Bohrloch |
| | Fazer furo |
| | Praticare un foro |
| | Gat boren |
| Percez un trou | |
| | Adjust |
| | Ajustar |
| | Einstellen |
| | Ajustar |
| | Regolare |
| | Afstellen |
| Ajuster | |
| | Remove |
| | Quitar |
| | Entfernen |
| | Remover |
| | Rimuovere |
| | Verwijderen |
| Retirez | |
| | Optional |
| | Opcional |
| | Optional |
| | Opcional |
| | Opzionale |
| | Optie |
| En option | |
| | Security Wrench |
| | Llave de seguridad |
| | Sicherheitsschlüssel |
| | Chave de segurança |
| | Chiave di sicurezza |
| | Veiligheidssleutel |
| Clé de sécurité | |

TOOLS REQUIRED FOR INSTALLATION



PARTS



ASSEMBLY

Preparing Desk Mount

1. Remove three screws from desk mount base. (See Figure 1)

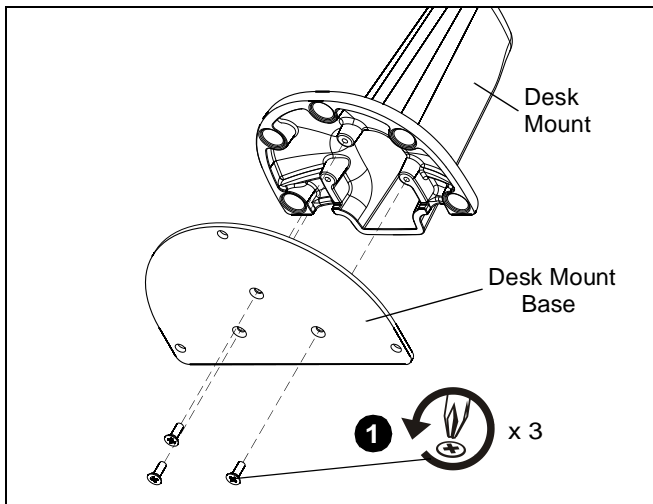


Figure 1

2. Attach five rubber bumpers (G) to desk clamp bottom. (See Figure 2)

NOTE: One extra rubber bumper (G) is included in the kit.

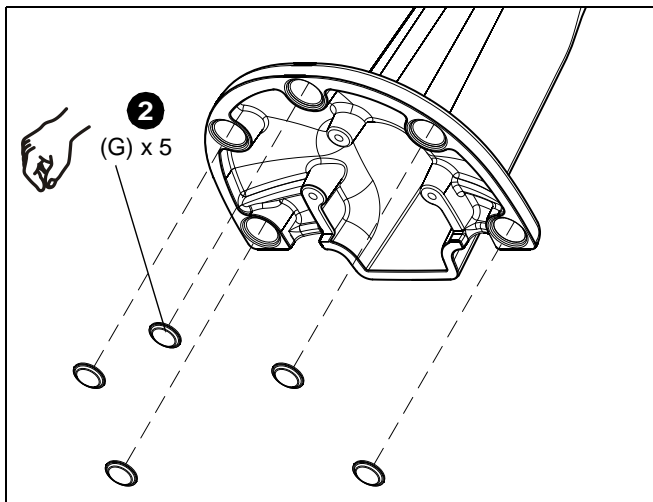


Figure 2

NOTE: To use desk mount in a clamp-style installation, proceed to **Clamp-Style Attachment** section. To use desk mount in a bolt-through installation, proceed to **Grommet Bolt-Through Attachment** section.

Clamp-Style Attachment

1. Attach clamp bracket (B) and bracket grommet plate (A) to desk mount using three M4 x 10mm flat head cap screws (D), one 5/16-18 x 4" button head cap screw (E), and one spacer (F). (See Figure 3)

NOTE: Proceed to **Clamp-Style Installation** section.

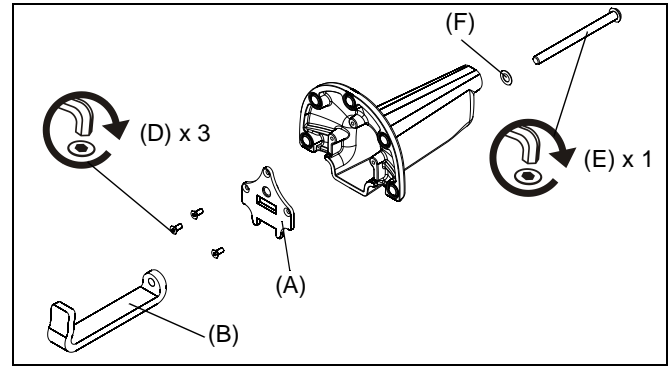


Figure 3

Grommet Bolt-Through Attachment

1. Attach bracket grommet plate (A) to desk mount using three M4 x 10mm flat head cap screws (D). (See Figure 4)

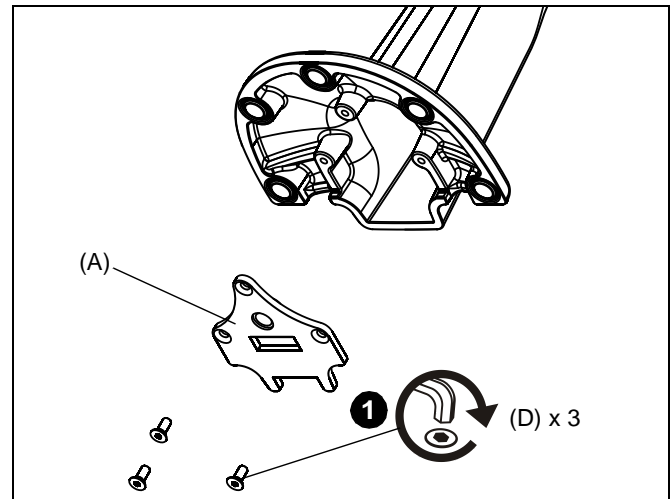


Figure 4

NOTE: Proceed to **Grommet Bolt-Through Installation** section.

INSTALLATION

Clamp-Style Installation

1. Place desk mount over edge of mounting surface so that clamp bracket (B) fully contacts mounting surface edge.
2. Tighten clamp bracket to mounting surface using 3/16" hex key (J) on 5-16/18 x 4" button head cap screw (E). (See Figure 5)

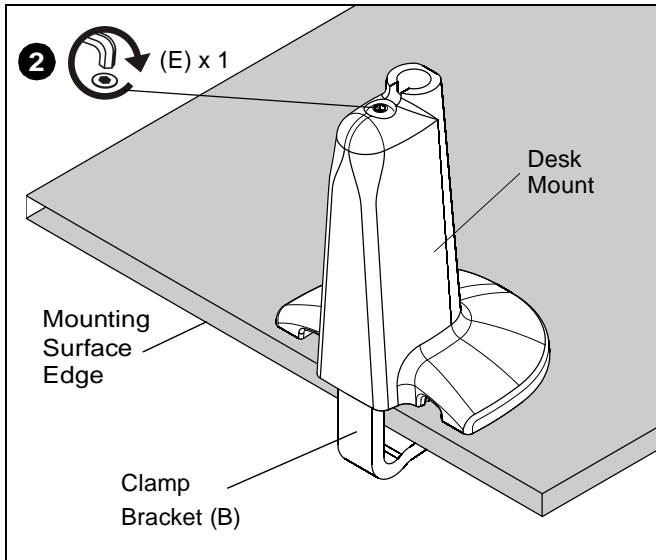


Figure 5

Grommet Bolt-Through Installation

1. From below mounting surface insert one 5/16-18 x 4" button head cap screw (E) through grommet bolt-through bracket (C) and up through hole in mounting surface. (See Figure 6)
2. Tighten screw with 3/16" hex key (J) into bracket grommet plate (A) of desk mount.

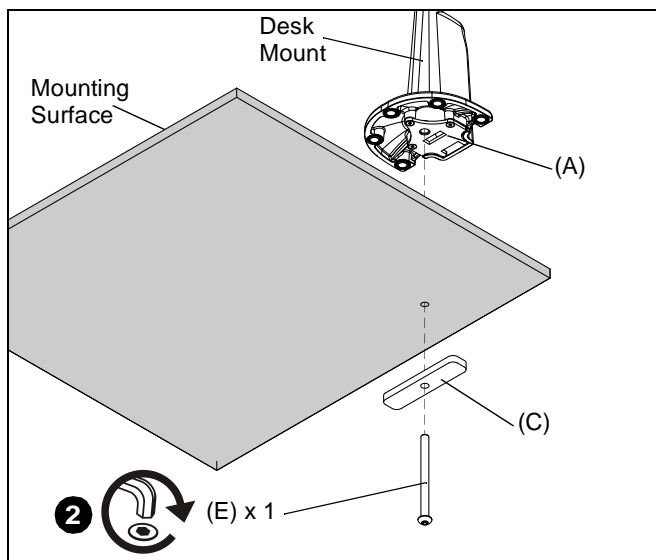


Figure 6



8832-000228
©2007 Chief Manufacturing
www.chiefmfg.com
06/07

| | |
|--------------------------|---|
| USA/International | A 8401 Eagle Creek Parkway, Savage, MN 55378 P 800.582.6480 / 952.894.6280 F 877.894.6918 / 952.894.6918 |
| Europe | A Fellenoord 130 5611 ZB EINDHOVEN, The Netherlands P +31 (0)40 2668620 F +31 (0)40 2668615 |
| Asia Pacific | A Room 30I, Block D, Lily YinDu International Building LuoGang, BuJi Town, Shenzhen, CHINA. Post Code: 518112 深圳市布吉罗岗百合银都国际大厦D栋30I P +86-755-8996 9226 ; 8996 9236 ; 8996 9220 F +86-755-8996 9217 |