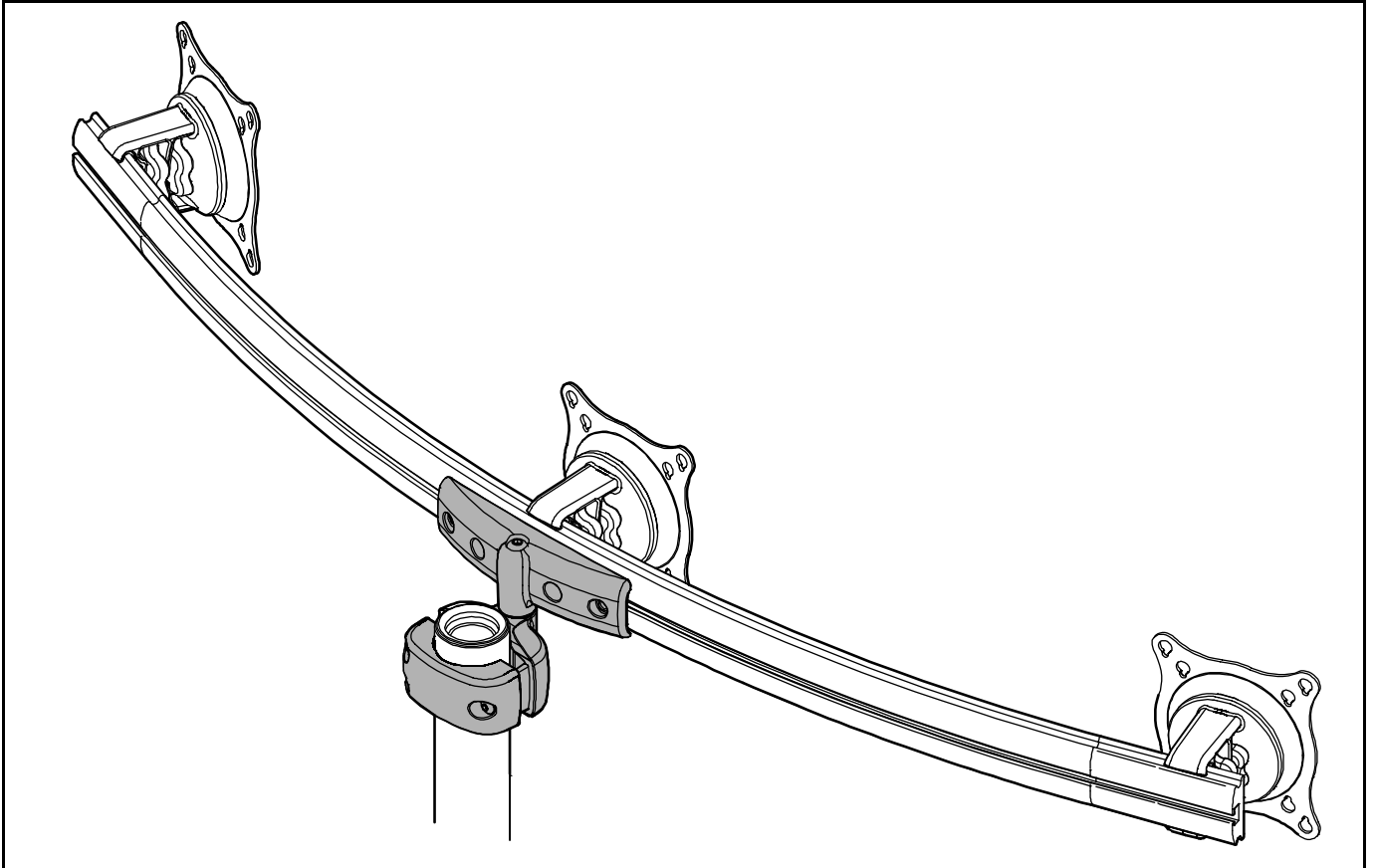

INSTALLATION INSTRUCTIONS

Dual Stand Array Pole Clamp Accessory

Model: MSP-WATAC1



BEFORE YOU BEGIN

⚠ CAUTION!

To prevent damage to the Kit, which could affect or void the Factory warranty, and to the equipment that will be attached to it, thoroughly study all instructions and illustrations before you begin the installation.

- If you have any questions about this installation, contact Chief Manufacturing at 1-800-582-6480.

TOOLS REQUIRED FOR INSTALLATION

- 5/32" Hex Wrench (provided)

INSPECT MOUNT BEFORE ASSEMBLY

Carefully inspect components for shipping damage . If damage is apparent, call your carrier claims agent and do not continue with installation until the carrier has reviewed the damage.(see Figure 1)

Table 1: Parts

ITEM	DESCRIPTION	QTY
10	WATAC1 Accessory	1
20	SCREW, Button Head Cap, 1/4-20 x 1/2"	4
30	NUT, Square, 1/4-20	4
40*	POLE, Array Mounting	1
50*	BASE, Array Mounting	1
60*	SCREW, Flat Head Cap, 3/8-16 x 1".	1
70*	ARRAY Assembly	1
80	WRENCH, Hex, 5/32" (provided)	1
90**	LOCK, End	
100**	SCREW, End Lock Retaining	

*Not included with MSP-WATAC1 Accessory. Must be purchased seperately.
 ** Not included with this accessory. Located in existing array.

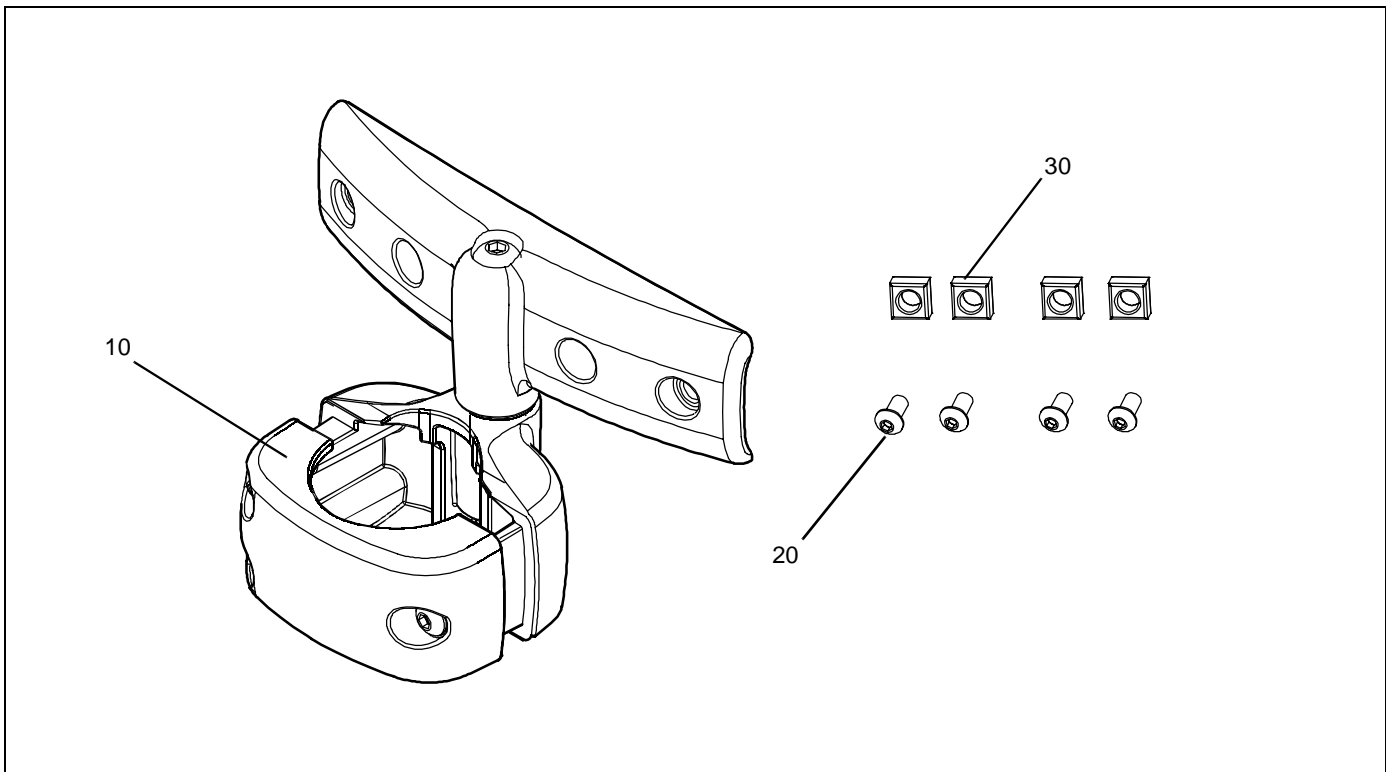


Figure 1: Parts

ASSEMBLY AND INSTALLATION

NOTE: The following procedures assume a base (50) and pole (40) have been purchased and are available and that no displays are mounted to existing array assembly.

1. Assemble pole (40) to base (50) using one 3/8-16 x 1" flat head cap screw (60). (see Figure 2)

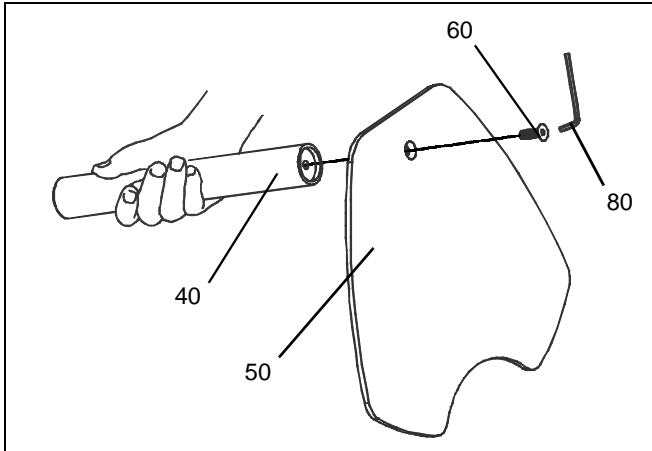


Figure 2: Assemble Pole to Base

2. Slide clamp accessory (10) onto pole (40), and position in approximate height as base for existing array assembly. (see Figure 2)

3. Tighten three button head cap screws to secure clamp accessory (10) to pole (40) using 5/32" hex key (80).

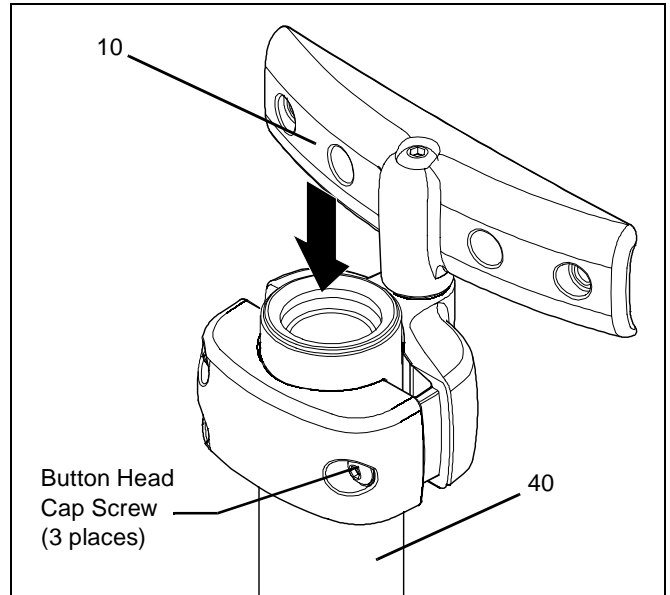


Figure 3: Assemble Array to Pole and Base

4. Loosen four Button head cap screws securing existing pole clamp to array.
5. Slide existing base towards left hand side of array approximately halfway between middle and left hand Centris cup.

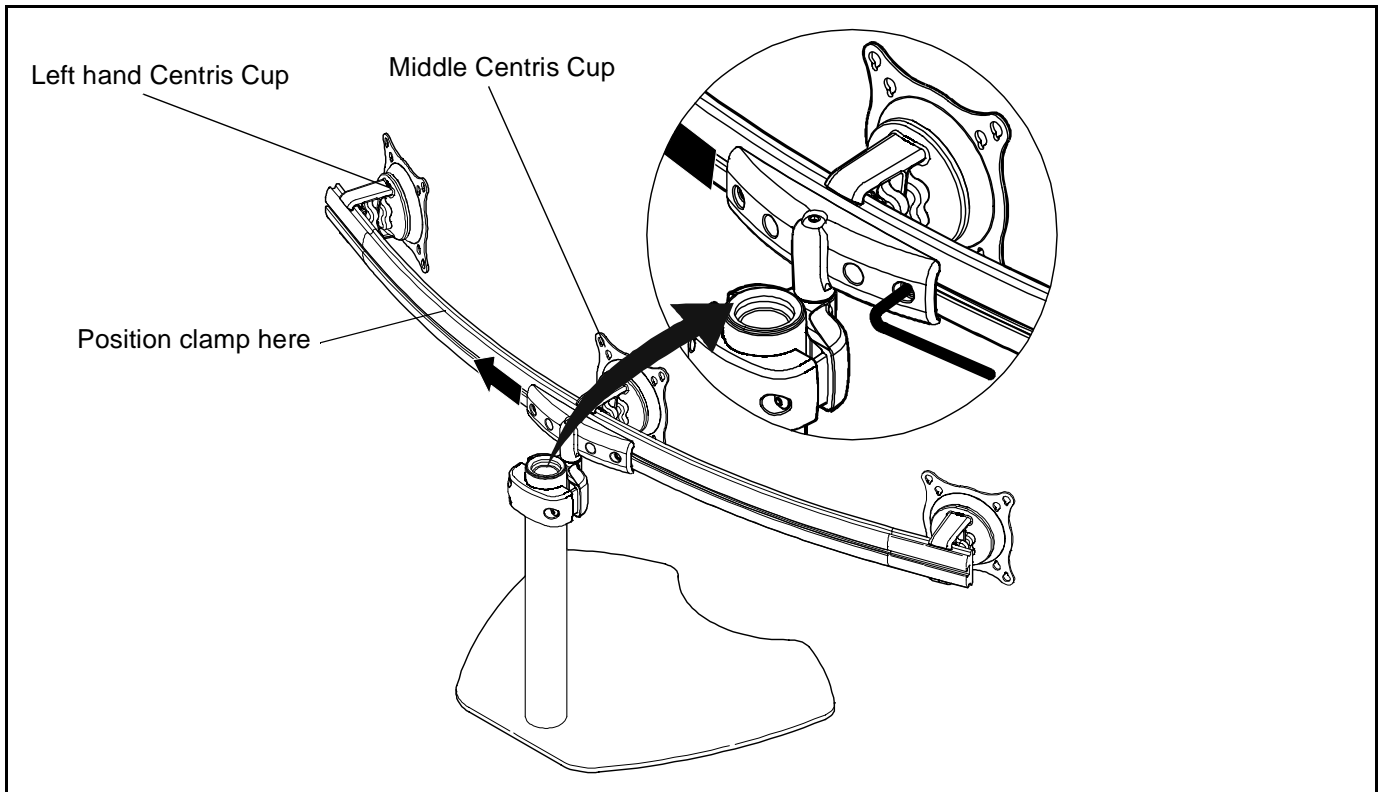


Figure 4: Reposition Existing Base Assembly

6. Loosen and remove end lock retaining screw (100) and set aside for reuse. (see Figure 5)
 7. Slide end lock (90) out of array channel and set aside for reuse. (see Figure 5)
 8. Install four square nuts (30) into array channel and position at approximate location mounting position.
- NOTE:** Chamfered side of square nuts should be facing pole.
9. Install end lock (90) into array channel and secure to array channel using retaining screw (100). (see Figure 5)

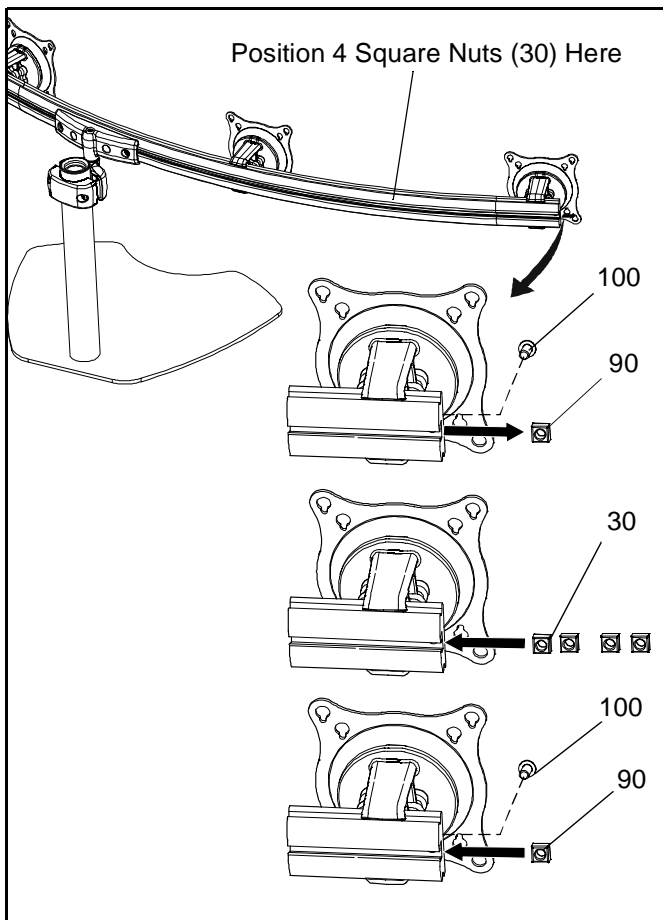


Figure 5: Install Mounting Nuts

10. Align new base assembly with new clamp accessory (10) with square nuts (30). (see Figure 6)
11. Install four button head cap screws (20) through new clamp assembly (10) and into four squares nuts (30) in array.

NOTE: DO NOT tighten at this time!

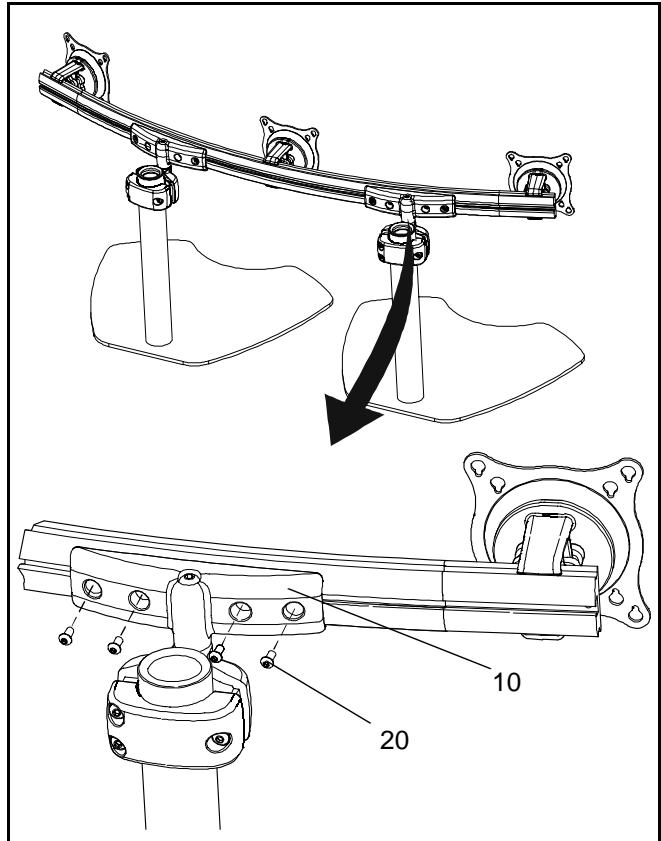


Figure 6: Position and Secure

12. Slide existing and new base assemblies left or right and position bases so that they are evenly spaced across array. (see Figure 7) and (see Figure 8)

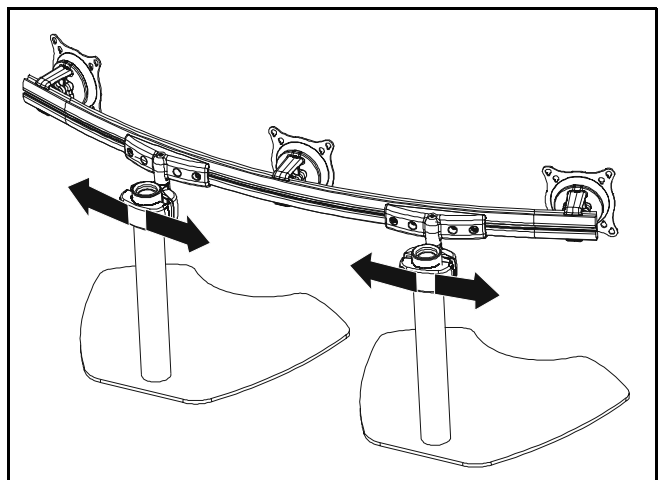


Figure 7: Adjust Base Position

13. Tighten eight button head cap screws to secure existing and new base assemblies to array rail using 5/32" hex wrench (80). (see Figure 8)

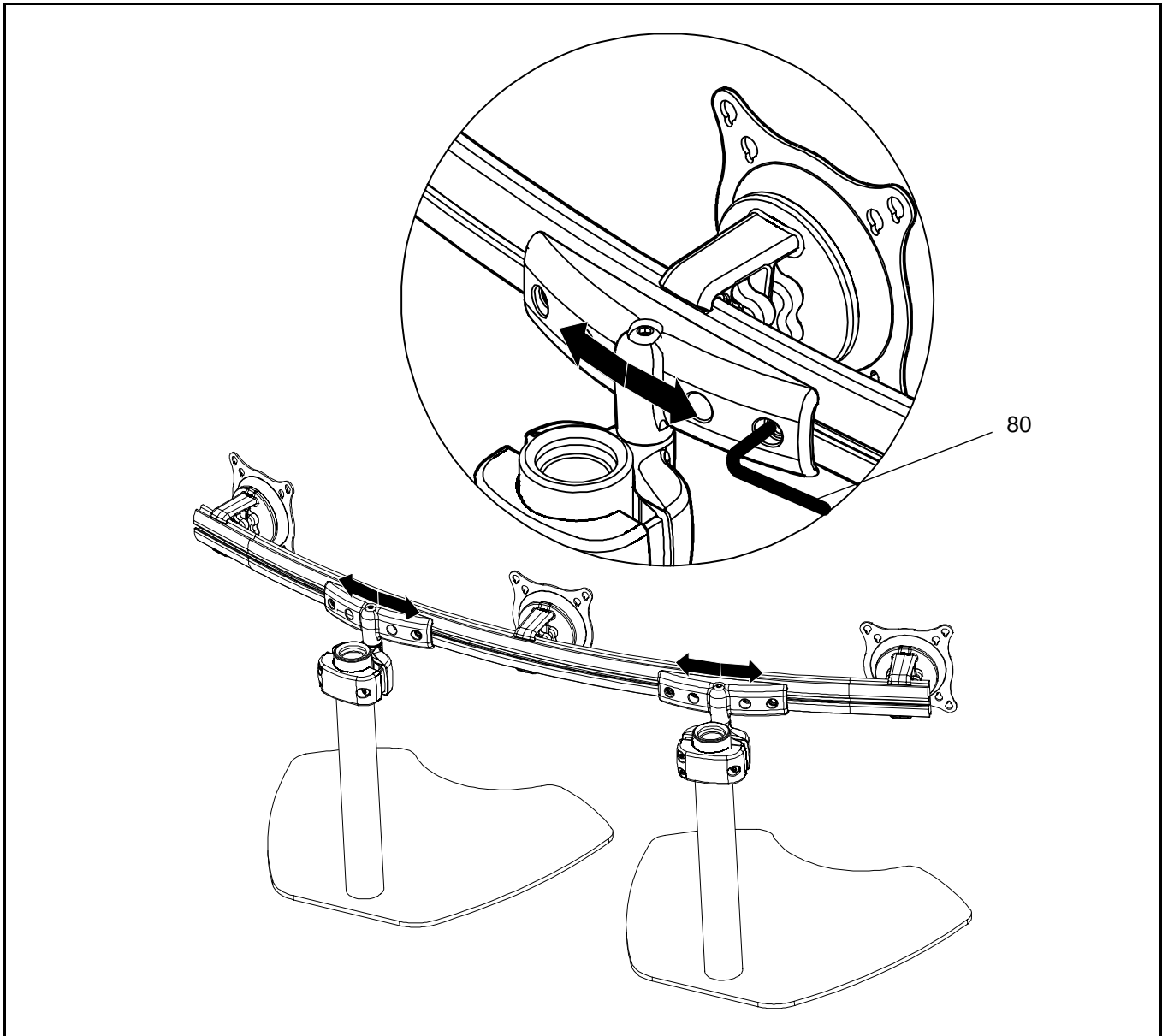


Figure 8: Position and Secure Base Assemblies to Array

