



PLASMA DISPLAY MOUNTING BRACKET PDB-80

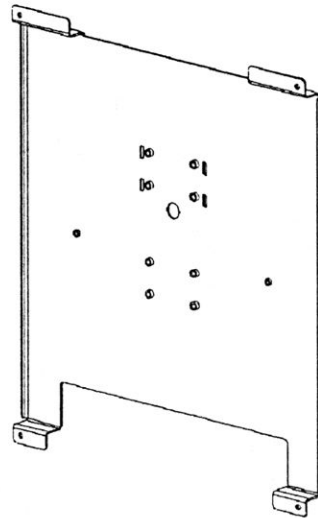
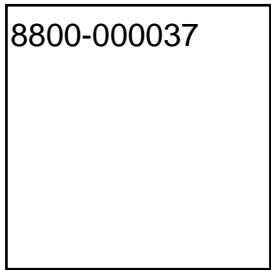
Unpack and check contents:

- (1) PDB - 80 Plasma Mounting Bracket
- (4) M8 - 1.25 x 20mm Socket Head Cap Screws
- (5) 5/16 - 18 x 5/8" Hex Head Bolts
- (1) 6mm Long Arm Allen Key
- (5) 3/8" ID x 29/32" OD Flat Washers

Installation Instructions:

1. Align hole pattern on PDB-80 with pattern on back of Plasma Display, with rectangular slots oriented towards the top of the Plasma Display.
2. Attach to Plasma Display using (4) M8 - 1.25 x 20mm SHCS.
3. With the aid of another person, lift Plasma Display up to Chief Mount. This Plasma Display can be mounted in one of two positions: one vertical & one horizontal. Each position has its own mounting pattern. There are two rectangular slots oriented at the top of each mounting pattern. Align the two rectangular slots of applicable mounting pattern in Plasma Mounting Bracket, with exposed J-hooks on Chief Mount, and hang Plasma Display onto J-hooks. Attach Plasma Display to Chief Mount using (5) 5/16 - 18 x 5/8" bolts & (5) 3/8" ID x 29/32" flat washers.

PDB-80 bracket drawing



CAUTION: PLASMA DISPLAYS ARE EXTREMELY FRAGILE!

Carefully lay display screen-side-down on a clean, preferably cushioned surface.

