

INSTALLATION INSTRUCTIONS

DISPLAY STATIC MOUNT PSM-2306

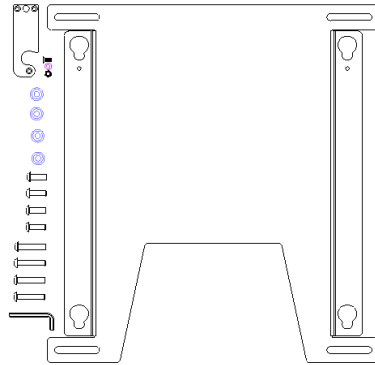


Figure 1

- | | |
|---|-----------------------------------|
| (1) Plasma Static Mount | (4) Mounting Buttons – Black Zinc |
| (4) M8 x 25mm Button Head Cap Screws | (1) Nylon Washer |
| (4) M8 x 35mm Button Head Cap Screws | (1) 10-24 Nylock Nut |
| (1) Latching Flag | (1) M5 Allen Key |
| (1) 10-24 x .5 Flat Head Undercut Screw | |

BEFORE PROCEEDING: Unpack the carton, verify contents shown in Figure 1 and read installation instructions completely.

CAUTION! Plasma Displays are Extremely Fragile.

1. Attach latching flag to mount using the 10-24 Phillips flat head screw, Nylon washer, and Nylock nut (see Figure 2). Tighten until friction will hold the flag in place.
2. Attach mounting buttons to display using four M8 screws provided (see Figure 3 & Figure 4). Determine whether to use M8 x 25mm or M8 x 35mm screws based on depth of holes.

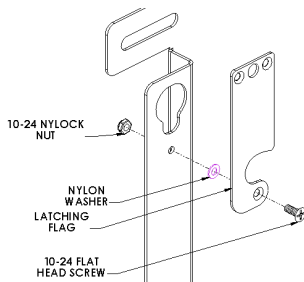


Figure 2

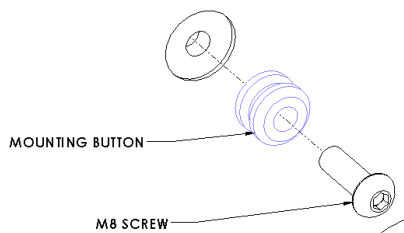


Figure 3

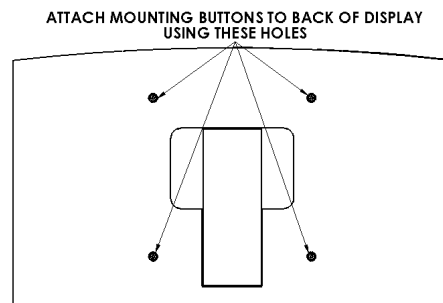


Figure 4

WARNING

ALL COMPONENTS MUST BE SECURELY FASTENED TO A STRUCTURAL MEMBER CAPABLE OF SUPPORTING 4 TIMES THE COMBINED WEIGHT OF ALL COMPONENTS PLUS THE EQUIPMENT BEING MOUNTED. IF IT CANNOT SUPPORT THIS WEIGHT, THE STRUCTURE MUST BE REINFORCED. THE MAXIMUM WEIGHT TO BE INSTALLED ON THE MOUNT IS 200 POUNDS (90.72 KG).

3. Securely anchor the static mount to wall studs or supporting framework (see WARNING).
4. Make sure the flag is lowered before attempting to place the screen on the mount.
5. With the aid of another person, lift the display up to the mount, align the mounting buttons on the display with the teardrop slots in the mount, and set the display into place (see Figure 5).
6. Position (raise) the flag to secure the display.

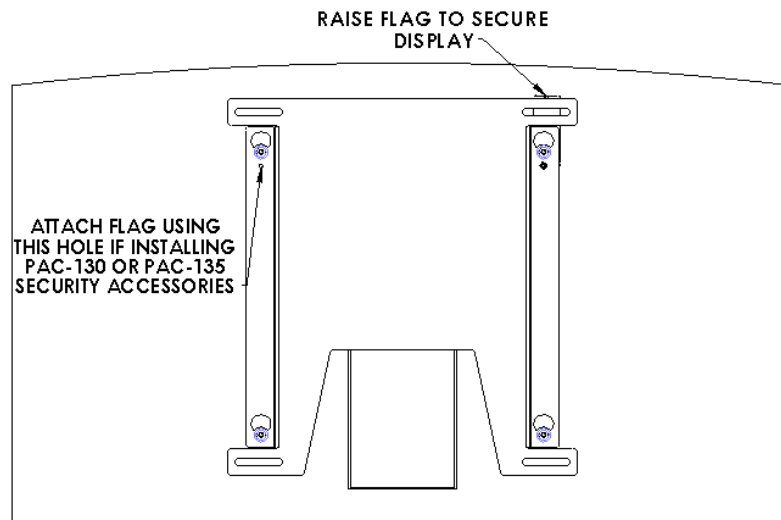


Figure 5