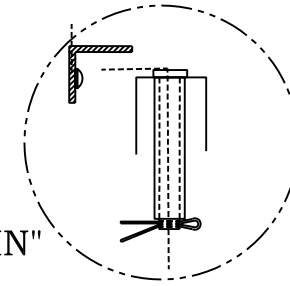
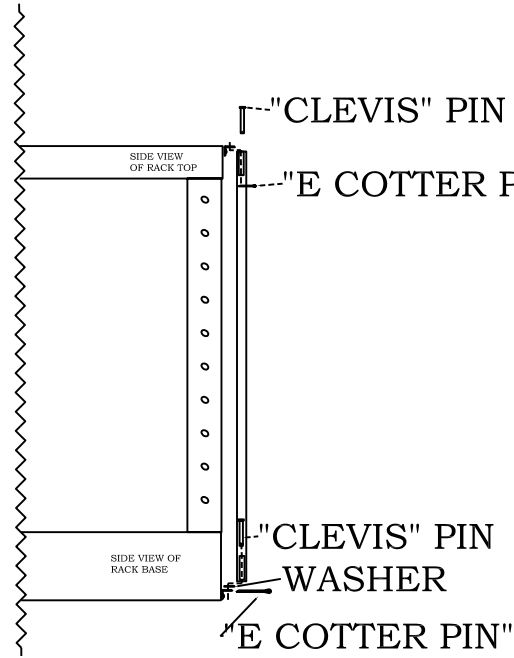
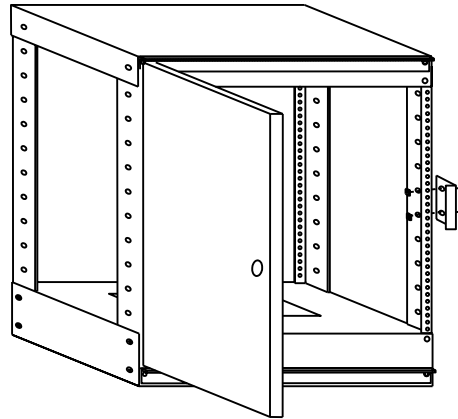


STEP 1: SCREW ONE "L" BRACKET TO THE TOP FRONT HOLES IN THE RACK, AND THE RAIL, AS SHOWN. THEN SCREW THE OTHER TO THE LOWER PORTION OF THE RACK FRONT AS IN THE ILLUSTRATION.



STEP 2: INSERT A CLEVIS PIN (LOOKS LIKE A SCREW WITH NO THREADS) INTO THE TOP BRACKET, THEN INTO THE DOOR HINGE AS SHOWN. FASTEN THE PIN WITH AN "E" COTTER PIN. NOW DO THE SAME AT THE BOTTOM, PLACING THE PIN FROM THE INSIDE OF THE DOOR.



STEP 3: ATTACH THE LOCK BRACKET TO THE RACK RAIL FROM THE OUTSIDE, USING THE 1/4-20 PEM (NO HEAD) STUDS SUPPLIED. YOU MAY HAVE TO REMOVE THE SIDE PANEL TO GET IN THERE. TIGHTEN THE NUTS SECURELY ON THE INSIDE.



261 Buffalo Avenue
 Paterson, N.J. 07503
 Made with pride in the U.S.A.