



INSTALLATION INSTRUCTIONS SLB-7630 HANGER BRACKET

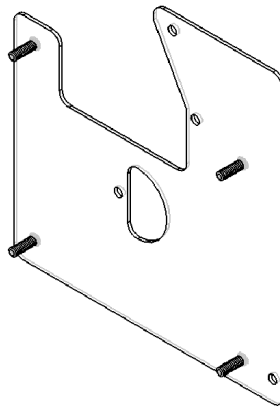
for 3M MP7630

Prior to assembly, unpack carton and verify contents.

For security installation, use security hardware package inside the ALL-POINTS™ Security Kit. Follow the instructions below for attaching the bracket to the projector using either standard hardware or security hardware.

If you are missing any of the following components, please contact Customer Service at 1-800-582-6480

- | | | | |
|-----|-----------------------------|-----|------------------------------------|
| (1) | SLB-7630 Bracket | (3) | M4 - 20mm Screws |
| (4) | 10 - 24 Thumb Nuts | (1) | M4 – 25mm Phillips Flat Head Screw |
| (3) | ½” x .190 x ½” Nylon Spacer | (3) | M4 Flatwashers |



INSTALLATION INSTRUCTIONS

1. Turn projector upside down.
2. Place the three ½” clearance spacers around the three inserts in the bottom of the projector.
3. Place the SLB-7630 bracket on to the three ½” clearance spacers, so the ½” clearance spacers are between the projector and the SLB bracket.
4. Line up the three mounting holes in the SLB-7630 bracket with the threaded inserts and secure using the three M4 -20mm mounting screws and #4 Flatwashers. (Some of these projectors have a mounting hole missing, in this case you need to use the longer 25mm flat head screw and install it in the hole that is located in the indented area where the extra hole is located between the two front threaded studs on the SLB bracket.) **CAUTION: When attaching the mount be careful not to overtighten screws.**
5. See RPA and/or Smart-Lift™ Instructions.