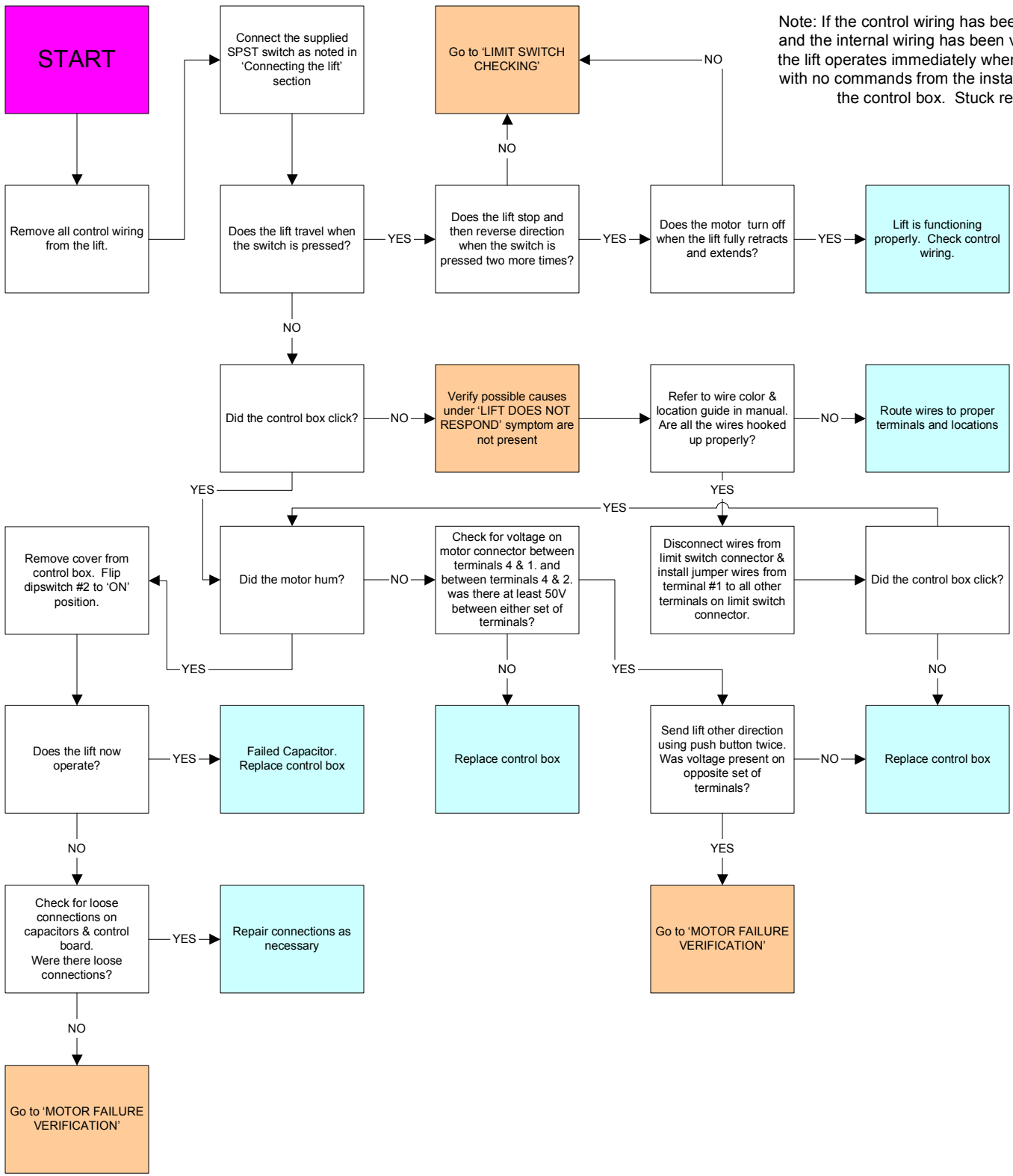


SOME TESTING PROCEDURES REQUIRE BYPASSING LIMIT SWITCHES, AND HAVE THE POTENTIAL TO HARM THE PERSON PERFORMING THE TEST. USE EXTREME CAUTION WHEN FOLLOWING THESE PROCEDURES!



Note: If the control wiring has been removed, and the internal wiring has been verified, and the lift operates immediately when plugged in with no commands from the installer, replace the control box. Stuck relay.