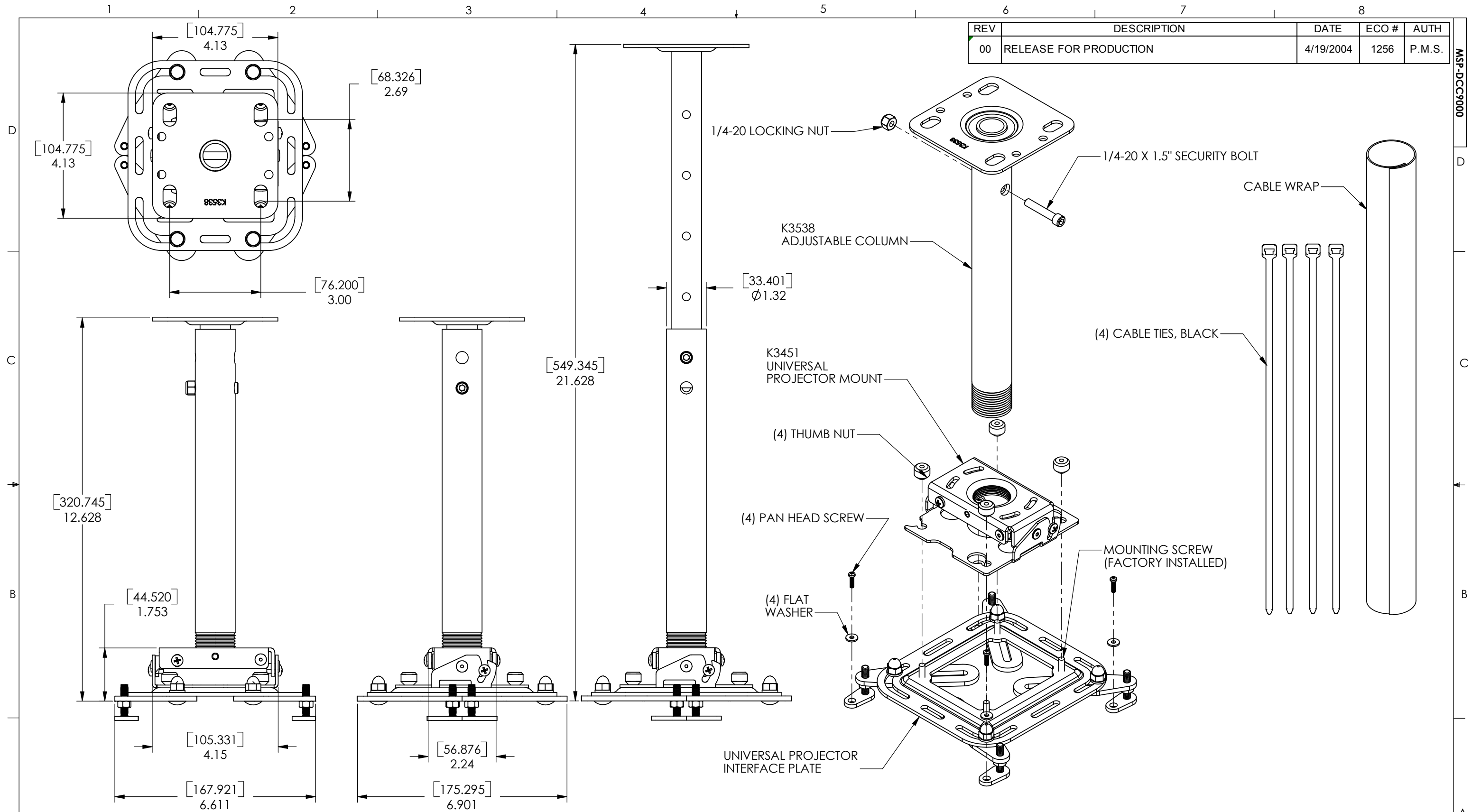


REV	DESCRIPTION	DATE	ECO #	AUTH
00	RELEASE FOR PRODUCTION	4/19/2004	1256	P.M.S.

MSP-DCC9000



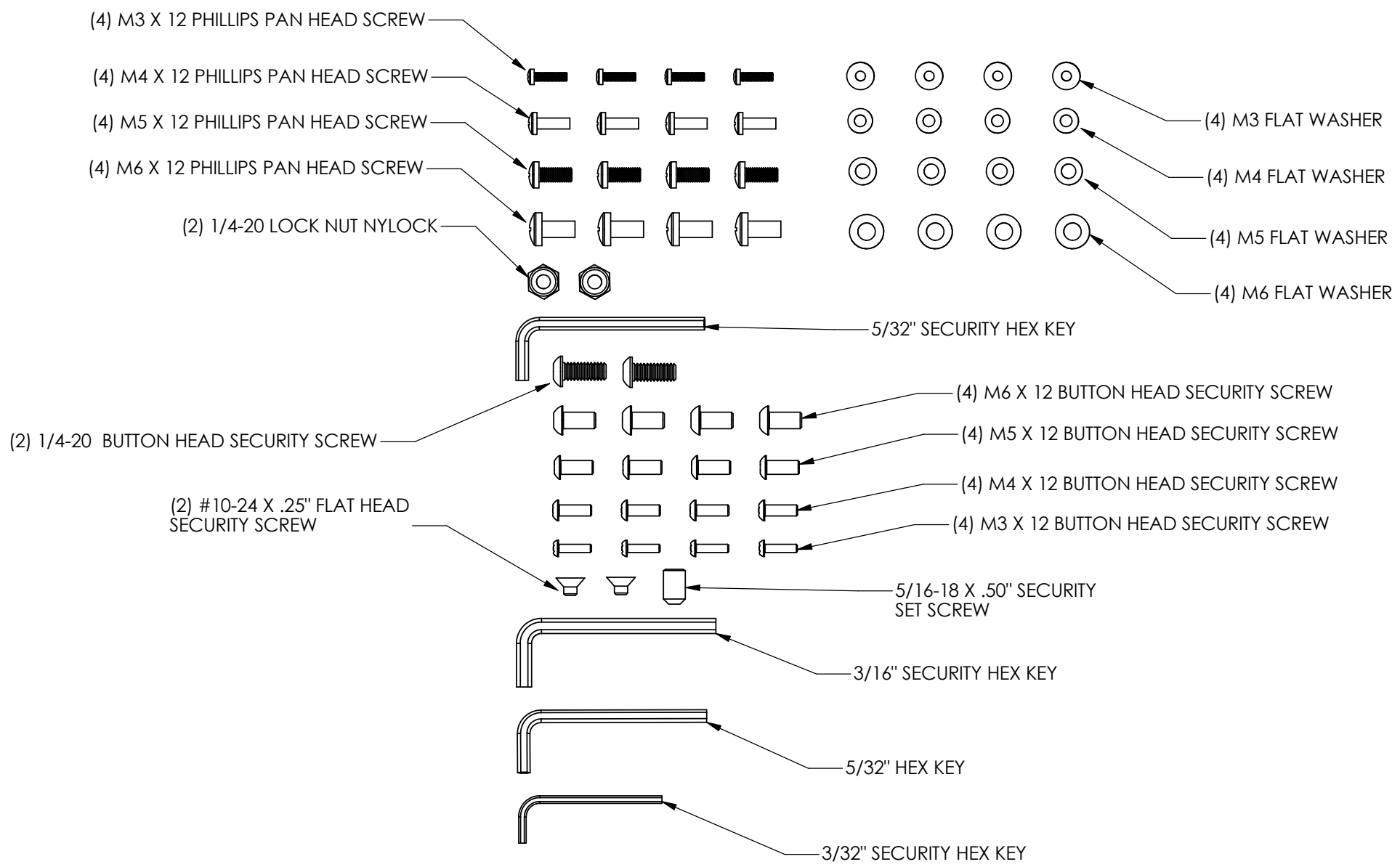
1. USE CABLE TIES TO SECURE CABLES TO EXTERIOR OF PIPE (OPTIONAL).
2. CABLE WRAP: CUT TO LENGTH AFTER SETTING COLUMN HEIGHT AND WRAP AROUND COLUMN TO HIDE CABLES ROUTED ALONG EXTERIOR OF COLUMN (OPTIONAL).
3. SECURITY HARDWARE: REPLACE STANDARD FASTENERS WITH SECURITY HARDWARE FOR ADDITIONAL SECURITY (OPTIONAL). REQUIRES REMOVAL OF (2) FACTORY INSTALLED MOUNTING SCREWS AND SECURING UNIVERSAL MOUNT WITH (2) #10-24 X .25" SECURITY SCREWS.

THE INFORMATION AND DESIGNS CONTAINED IN THIS DRAWING ARE CONFIDENTIAL AND THE PROPRIETARY PROPERTY OF CHIEF MFG., INC. NEITHER THIS DESIGN NOR ANY INFORMATION CONTAINED IN THIS DRAWING MAY BE REPRODUCED OR DISCLOSED TO OTHERS WITHOUT THE EXPRESS WRITTEN CONSENT OF CHIEF MFG., INC.

THIRD ANGLE PROJECTION		[X.XX] DIMENSIONS ARE IN mm [.XXX] DIMENSIONS ARE IN INCHES		CAD GENERATED DRAWING. DO NOT MANUALLY UPDATE	
UNLESS OTHERWISE NOTED TOLERANCES ARE:		DATE	4/19/04	TITLE	
[X] ± 2.5mm	.X ± .100	DESIGNER	D.L.D.	KIT, UNIVERSAL PROJECTOR MOUNT	
[X.X] ± .75mm	.XX ± .030	DETAILER	D.L.D.	SIZE	
[X.XX] ± .25mm	.XXX ± .010	RESP ENG	D.L.D.	DWG. NO.	
[X.XXX] ± .13mm	.XXXX ± .005	SHEET 1 OF 2		REV.	
ANGULAR: ± 0°30'	SURFACE FINISH: 125		MSP-DCC9000		00
MATERIAL	FINISH		N/A		

REV	DESCRIPTION	DATE	ECO #	AUTH
00	RELEASE FOR PRODUCTION	4/19/2004	1256	P.M.S.

MSP-DCC9000



THE INFORMATION AND DESIGNS CONTAINED IN THIS DRAWING ARE CONFIDENTIAL AND THE PROPRIETARY PROPERTY OF CHIEF MFG., INC. NEITHER THIS DESIGN NOR ANY INFORMATION CONTAINED IN THIS DRAWING MAY BE REPRODUCED OR DISCLOSED TO OTHERS WITHOUT THE EXPRESS WRITTEN CONSENT OF CHIEF MFG., INC.

THIRD ANGLE PROJECTION	
DIMS. AND TOLERANCES PER ASME Y14.5 - 1994	
MATERIAL SEE TABLE	
FINISH N/A	

[X.XX] DIMENSIONS ARE IN mm .XXX DIMENSIONS ARE IN INCHES	
UNLESS OTHERWISE NOTED TOLERANCES ARE:	
[X] ± 2.5mm	.X ± .100
[X.X] ± .75mm	.XX ± .030
[X.XX] ± .25mm	.XXX ± .010
[X.XXX] ± .13mm	.XXXX ± .005
ANGULAR: ± 0°30'	
SURFACE FINISH: 125√	

CAD GENERATED DRAWING. DO NOT MANUALLY UPDATE	
DATE	4/19/04
DESIGNER	D.L.D.
DETAILER	D.L.D.
RESP ENG	D.L.D.
SHEET 2 OF 2	

<p>CHIEF MANUFACTURING, INC. 12800 HWY 13 S., STE. 500 * SAVAGE, MN 55378 P 952-894-6280 * F 877-894-6918</p>	TITLE	<p>KIT, UNIVERSAL PROJECTOR MOUNT</p>
	<p>SIZE B DWG. NO. MSP-DCC9000 REV. 00</p>	